



1. **Introduction**
2. **Contributions**
3. **Network News**
4. **Events**
5. **Recent publications**
6. **Outlook**
7. **Membership**

LANDSCAPE EUROPE – Newsletter Issue No. 14 – November 2011*

1. **Introduction**

Dear LANDSCAPE EUROPE readers,

The coordination office for the LANDSCAPE EUROPE network has been changed after 10 years. During the General Assembly meeting in Brussels (later in the Newsletter) Alterra has passed the role of leader to ILESAS.

The work of the network so far, can be assessed by numerous activities initiated especially by Bas Pedrolí and Dirk Wascher. In particular, contributing to the preparation of joint project proposals, input into the further development of the European Landscape Convention, active communication with policy makers or the production of many scientific outputs was evident during the lifetime of the network. The effect of LANDSCAPE EUROPE activities was not always easy to show, but there is a spin-off, an notable influence through being invited to participate in several initiatives. Coordinators stressed the ambition of LANDSCAPE EUROPE to go beyond running projects together and to be coherent in the message on the landscape and bring it into the research and policy agenda. The enlargement of the network over the past years caused the partial broadening of its main focus and demanded communication within LANDSCAPE EUROPE.



Further improvements, as expressed by the majority of members of LANDSCAPE EUROPE, tend primarily toward strengthening cooperation through common projects and publishing opportunities. Meanwhile the clear and uniform target of LANDSCAPE EUROPE as “*the interface of policy implementation, education and state-of-the-art science in support of sustainable landscapes*” must be kept in mind. The main challenge for ILESAS is to move forward with internal communication with, and between members and to constantly address landscape issues with policy representatives, decision-makers, scientists and the wider European public. Measures to achieve these objectives (later in the Newsletter) were presented by ILESAS during the General Assembly. Finally we would like to encourage all of you to not hesitate to share your knowledge, experience or simply to converse about the landscape.

On behalf of LANDSCAPE EUROPE:

Peter Bezák and the ILESAS team
Network coordination office

* This is the 14th Newsletter of LANDSCAPE EUROPE, the International Network of Expertise on the Landscape. You can find more information on LANDSCAPE EUROPE on our website: www.landscape-europe.net. Please feel free to forward the newsletter to other interested people in the broad field of landscape science that seeks to integrate natural, social and economic research. If you do so, please ask them to mail (peter.bezak@savba.sk) with their contact information.

2. Contributions



The 8th IALE World Congress

Jana Špulerová

The 8th IALE (International Association for Landscape Ecology) World Congress took place in Beijing, between the 18th and 23rd of August 2011. The congress was jointly organized by the IALE-China Chapter, The Research Centre for Eco-Environmental Sciences, CAS, The Ecological Society of China and Peking University. More than 850 delegates from 47 countries and regions attended this conference. The countries best represented were China, The United States, The United Kingdom, The Netherlands and Germany. More than 30 % of the attendees were students and the congress had a special section offering training courses related to urban ecology and landscape ecology methods.

The theme of the 8th IALE World Congress was landscape ecology for sustainable environment and culture. The IALE meeting benefited from the presence of renowned researchers such as Richard Forman (Professor of Landscape Ecology at Harvard University), Paul Opdam (Senior Researcher at the ALTErrA research institute, Wageningen University), Robert Costanza (Director of the Institute for Sustainable Solutions at Portland State University) and Jianguo Wu (Professor of Landscape Ecology and Sustainability Science at Arizona State University). Consisting of 7 plenary speeches, 13 symposiums, 520 oral presentations and 140 posters, the conference covered the topics of global biodiversity and ecosystem services, landscape ecology and culture protection, landscape and urban planning, accommodating biodiversity responses and engineering restoration in adapting to climate change, etc. The main topics of discussion were related to the services that humans derive from ecosystems and their quantification, imminent threats to landscapes and biodiversity as well as cultural and urban landscapes across the world.

To encourage young researchers, IALE and The Chinese Academy of Sciences sponsored 40 young scientists and graduate students from 25 countries to attend the conference in Beijing.

The success of the 8th IALE World Congress in Beijing not only boosted communication and cooperation among researchers from different countries, but also represented the academic level in China and broadened the horizons of landscape ecology.



Mid-Congress Excursion to the Great Wall

More information about the congress: <http://www.iale2011.org/>



12th EEF Congress

Zita Izakovičová and Luboš Halada

The 12th Congress of the European Ecological Federation (EEF) was held in Ávila, Spain on 25-29 September 2011. It was hosted and organized by the Spanish Terrestrial Ecology Society (AEET) in collaboration with the Portuguese Ecological Society (SPECO). The congress continued in the EURECO tradition.

The main topic of the Congress was: “Responding to Rapid Environmental Change”. The basic goal of this congress was mapping how ecologists are meeting one of the great challenges of today: how to deal with the impact of global change on ecosystems. The Program was very rich and challenging, it consisted of 6 invited plenary presentations and 36 symposiums. In total there were 36 invitational session talks, 249 oral presentations, 116 oral flash presentations and 485 posters were presented. The themes of the symposia covered a broad scale of topics.

There was broad interest in the symposium due to the large number of participants and even the seating capacity for some sessions was insufficient. From my point of view, it was positive to see the considerable interest of the younger generation in the Symposium. It gives us the guarantee of the successful and continuous development of the individual ecological disciplines. The festive atmosphere of the Symposium was highlighted by the venue of the symposium, in the historical city of Avila. Ávila is the city where the art, gastronomy, culture and nature are celebrated. Ávila is a medieval city, with a distinct architectural and cultural heritage. Besides guided city tours, the organizers prepared interesting field excursions for participants, during which they could not only become acquainted with the results of ecological studies but also had the opportunity to enjoy the beauty of the landscape of the visited regions: Aranjuez Experimental Station and gypsum environments in the south of Madrid, Sierra de Guadarrama, Valle del Tiétar, and Valle de Iruelas.

For more information on the congress visit: <http://www.eefcongress2011.eu/>

ESF-COST policy briefing

Peter Bezák

The seminar “Landscape in a Changing World” organised with the support of ESF and COST and the help of UNISCAPE and LANDSCAPE EUROPE, was held on Friday 14 October 2011 at the COST Office in Brussels. Around 40 participants attended the event, including policy makers, researchers and other stakeholders. Several representatives of the UNISCAPE and LANDSCAPE EUROPE networks participated too. This action followed the ESF-COST Science Policy Briefing Nr. 41 published in October 2010 and launched in Florence at the tenth anniversary of the Council of Europe’s Landscape Convention. The main aim of the seminar was to interactively discuss opportunities and to define actions answering demands for the stronger impact of landscape research on European policy and society. The Action Plan drafted before the seminar was reviewed and intensively discussed and was grounded on the following selected themes:



- *Landscape as Universal Commons: a common good*
- *Roots and Routes: mobility & evolving lifestyles*
- *Reactions and Resilience: long-term transformations*
- *Road-maps: context for future change*



These themes have direct relevance for many current EU policy issues: The Common Agricultural Policy 2014-2020, Renewable Energy Directive, Climate Change Programme, Cohesion policy 2014-2020, Biodiversity Policy 2020 – these all inevitably touch on the landscape.

As well as comments and ideas which appeared during the seminar, communication has been further ongoing through email. Recently Bas PEDROLI and Graham FAIRCLOUGH have taken charge of revising the Action Plan and preparing the final document for the EU policy level.

3. *Network news*

LANDSCAPE EUROPE General Assembly, Thursday 13 October 2011, Brussels

Peter Bezák

The General Assembly (GA) was attended by 10 participants representing eight LANDSCAPE EUROPE members. The programme of the meeting was focused especially on two main topics:

- reviewing the past 10 years of LANDSCAPE EUROPE'S existence and
- presentation of the Action plan for the development OF LANDSCAPE EUROPE over the next few years

Dirk Wascher, as former Network coordinator, gave a presentation (see LANDSCAPE EUROPE website) about the history and key milestones of the network, its main activities, results achieved and lessons learnt. Participants of the GA agreed that the ambition of LANDSCAPE EUROPE is to go beyond running projects together and be coherent in the message on the landscape and bring it onto the research and policy agenda. On the other hand, the network is still very broad and not always focussed.

Peter Bezak, as new Network coordinator, gave suggestions for the further development of the network (the Action plan) over the next two years as perceived by the Institute of Landscape Ecology, Slovak Academy of Sciences (ILESAS) – new LANDSCAPE EUROPE Network office. The Action plan is briefly described in the following section. Fruitful discussion was held by the participants in order to express their own views on the presented ideas and to fine-tune details of activities which were accepted by the members.

The official transfer of the Network Office from Alterra (Bas Pedroli) to ILESAS (Peter Bezák) was carried out in between the above-mentioned presentations.

LANDSCAPE EUROPE Action plan 2012-2013

Peter Bezák and the ILESAS team

1. To improve active cooperation and exchange of information within LANDSCAPE EUROPE
 - to reconsider recent contact points and include active people from each organisation

- to distribute a short questionnaire to all partners in order to investigate recent attitudes towards the LANDSCAPE EUROPE network and expectations for the future (6 questions already addressed)
2. Intensify information flows for internal needs and for the public
 - electronic informative update generated from the LANDSCAPE EUROPE website for the wider public audience (email news about conferences, ongoing projects, project calls, publications, etc.)
 3. Provide more detailed information on:
 - published books including short annotations/abstracts
 - list of local/regional calls for project proposals
 - list of recent initiatives and networks in Europe
 - short description of 1-2 LANDSCAPE EUROPE members in Newsletters and their landscape research outputs
 4. Launch the publication of a series of books under the coordination of LANDSCAPE EUROPE
 - regular publications of LANDSCAPE EUROPE network every 2 years with a focus on the selected actual topic
 5. Include motivational elements in LANDSCAPE EUROPE activities
 - launch a competition for young researchers (under 35) for the best publication about the landscape – awarded with a LANDSCAPE EUROPE diploma, a LANDSCAPE EUROPE publication and a financial prize
 6. Organise a European Conference on Landscape Education in 2013 in Paris (together with UNISCAPE)

4. Events

The Careggi Seminars

UNISCAPE has taken the initiative to launch the Careggi Seminars in order to celebrate the intellectual activity that once took place in the Villa Medicea of Careggi. The aim of this initiative is to periodically gather scholars, experts and public authorities in Florence to enhance the scientific debate on local and European practices and experiences regarding the landscape.

The first seminar took place on the 10th of November 2011 with the theme of participation; the next seminars are the following:

- The second seminar (**March 2012**), topic: rural landscapes
- The third seminar (June 2012), topic: energetic landscapes
- The fourth seminar (October 2012), topic: soundscapes
- The fifth seminar (March 2013), topic: landscape observatories
- The sixth seminar (June 2013), topic: the role of the landscape in environmental impact assessment procedures
- The seventh seminar (October 2013), topic: governance and landscape policies

For more information see: <http://www.uniscape.eu>

Planet under pressure

The conference will be held in **London**, in **March 26–29, 2012**. The conference will discuss solutions, at all levels, to move societies onto a sustainable pathway. It will provide scientific leadership towards the 2012 UN Rio +20 conference. Guiding the direction of the

conference is the International Council for Science's five grand challenges for global sustainability research: observations, forecasting, thresholds, governance and economic requirements and innovation (technological, political and societal). The conference will also support international assessment processes, for example the Intergovernmental Panel on Climate Change and the new biodiversity assessment, plus the Millennium Development Goals. The programme will be designed to attract senior policymakers, industry leaders, NGOs, young scientists, the media, health specialists, and academics from many disciplines.

For more information see: <http://www.planetunderpressure2012.net>

2nd Forum Carpaticum - From data to knowledge, from knowledge to action

The 1st Forum Carpaticum (2010) identified the need for better information on data generation, availability, and accessibility in the Carpathians, especially related to pan-Carpathian datasets. Forum Carpaticum 2012 (**30 May – 2 June 2012 Stará Lesná, Slovakia**) will address this need by covering the whole Data-Knowledge-Action cycle, i.e. focusing on how data is generated and transformed into useful knowledge, how the knowledge is transferred to policy and practice, and how it can feed back to research planning. Apart from identifying recent state-of-the-art practices, at FC2012, measures to improve the Data-Knowledge-Action cycle will be proposed and discussed.

The conference programme will offer plenary and parallel sessions, workshops, and poster presentations. The Forum Carpaticum 2012 will discuss the data-knowledge-action circle in three overarching and overlapping themes:

- The Abiotic Environment
- Biodiversity and ecosystems
- Human Dimensions

Issues of natural resource management, land use change, sustainability and cultural heritage are included in the Human dimensions theme.

For more information see: <http://www.forumcarpaticum.org>

1st International Conference on Environmental and Economic Impact on Sustainable Development

The 1st International Conference on Environmental Impact and Development (**3-5 July 2012, New Forest, UK**) originated from the need to provide an inter-disciplinary forum where the most serious problems affecting sustainable development can be discussed. The basic premise is that development projects need to consider the most pressing issues related to environmental impacts in order to provide complete solutions.

The current emphasis on sustainable development is a consequence of the general awareness of the need to solve numerous environmental problems resulting from our modern society. This has resulted in the need to assess the impact of economic investments on the environment. The topic of investment assessment and environmental economics needs to be discussed in an integrated way, in accordance with the principles of sustainability, considering the social and environmental aspects of new investments, as well as possible environmental damage.

The conference will address issues related to environmental toxicology and hazardous waste. The conference will also examine issues related to whether development enterprises are compatible with environmental protection, dealing in particular with cases of possible severe contamination and toxicity. The most important motivation for the conference is to learn from past failures, to not repeat the same mistakes while attempting to prevent emerging threats to the environment and ecological systems.

For more information see: <http://www.wessex.ac.uk/12-conferences/environmental-impact-2012.html>

XV. International Conference of Historical Geographers

XV. International Conference of Historical Geographers – will be held in **Prague** from **August 6–10, 2012**. The Prague conference is historically the first to be held in a post-communist country. It is open to all historical geographers and scholars from related disciplines, such as history, environmental history, landscape ecology, environmental studies, etc.

For more information, visit the conference website: <http://www.ichg2012.cz>

The 32nd International Geographical Congress

The 32nd International Geographical Congress in **Cologne (Germany, 26-30 August 2012)** focuses scientific attention on the core themes of humanity. Researchers from around the world are expected in Cologne in 2012. Geographers bring the wide-ranging perspectives and methodology of their subject to bear on four major thematic complexes and contribute to the solution of urgent scientific and socio-political issues – bringing research down to earth:

- Global Change and Globalisation
- Society and Environment
- Risks and Conflicts
- Urbanisation and Demographic Change

For more information see: <https://igc2012.org>

5. Recent publications

Representative landscape types of Slovakia
Zita Izakovičová and Peter Bezák



One of the most recent publications of ILE SAS – the scientific monograph „*Representative landscape types of Slovakia*“ deals with the landscape as a territorial integrity of environmental, cultural and economic activities. The publication is the main output of the project where methodology for the identification of representative landscape types of Slovakia was developed. Delineation of the homogeneous units – landscape types was based on a synthesis of two factors: morphological-morphometric parameters (type of relief, quaternary deposits, climatic regions, and soil types) and prevailing land cover (CORINE Land Cover 2006 – CLC). The GIS (Geographical Information Systems) tool was used to create a patched map of homogeneous areas, which were further interpreted, generalized, and regionalized into a final map of the representative landscape types of Slovakia (RLTS).

The georelief, as a main abiotic factor for landscape-ecological processes, was considered as the most important abiotic factor for RLTS division. Three basic categories were defined: landscape of lowlands, basins and mountains. The mountain landscape is dominant in Slovakia, covering around 53% of the total area. The lowland landscape occupies 29% and the basin landscape 18% of the total area. Within each category, sub-categories were specified: 5 (lowland), 3 (basins), 10 (mountains), which closely describe a form of relief. The land-cover categories were grouped into the main 18 basic units expressing different types of land use. The defined categories of land cover were relevant in the scale of elaboration (1: 500 000). The dominant element of land cover in Slovakia is agricultural landscape with a

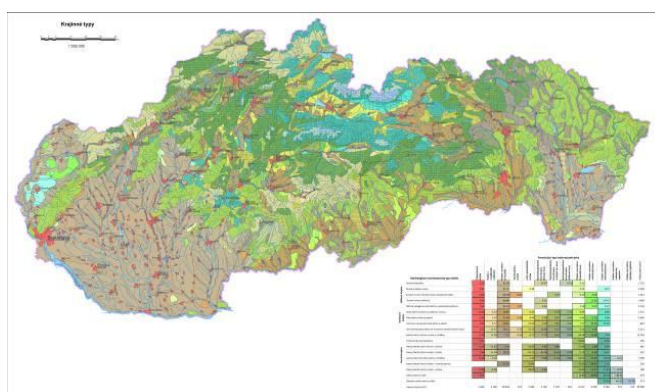
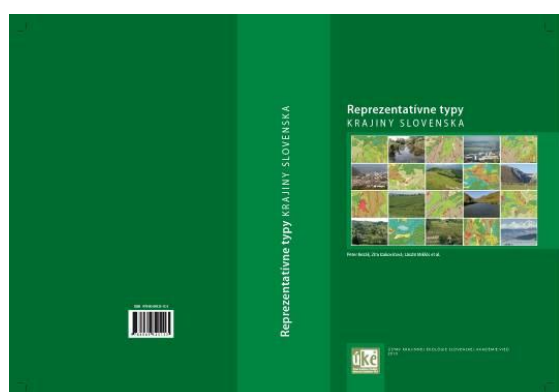
prevalence of arable land use. Forests evaluated on the basis of prevailing species composition are also represented significantly. The third most large-scale category is the combined category of the agricultural-forest landscape. The landscape types of Slovakia were defined by the synthesis of the mentioned maps (a map of the georelief and a CLC map). In total, 126 basic landscape types were identified. Each landscape type represents a unique combination of land-use in different abiotic conditions and gives a unique environment for natural development.

In the second stage, rare and unique landscape types of Slovakia were identified. Unique types include: landscape of cliff zones, volcanic landscapes, the landscapes of depressions and wetlands, the landscape system of river branches, landscapes of World Cultural and Natural Heritage sites. Rare types include: karst landscape of plateaus, the landscape of high mountains, the landscape of stratovolcanoes and the landscape with historical landscape structures.

The subsequent investigation was focused on the assessment of these units from the point of view of nature protection, their recent degradation and threats, taking into account global changes in Slovakia, especially development after the Second World War. The final step included the preparation of a management proposal with the aim of maintaining all representative landscape types and to secure their sustainable development and protection.

The project operated at two spatial scales: the national level and the local level (10 case studies or different landscape types were investigated in detail). As well as the use of various disciplines like ecology, socio-economy, history, GIS, a transdisciplinary approach was implemented (the effective engagement of stakeholders) as well.

The concluding impacts of the global changes on the Slovakian landscape during the last several decades have been significant determinants of human activities. Processes like urbanisation and socialistic industrialisation mainly impacted the landscape of the lowlands and basins with agricultural use or the mosaic of forests and agricultural areas with urban centres. Predominantly the basins in between the mountains are the localities of high absorption of human interventions when considering the natural limits and thresholds. Moreover, nature protection of the landscape in the lowlands and basins is underestimated in Slovakia and thus the influence of some recent pressures persists. On the other hand, land abandonment is mainly connected to the mountainous regions (uplands, highlands) of rural settlements, including dispersed settlements, with land use of the extensive farming-forests mosaic. Forest ecosystems in the mountainous territories are the stable elements of the landscape structure in the last decades, as nature protection has significant status in many locations and forestry is more or less based on constant long-term management.



Publications

- Ammer, C., Balandier, P., Bentsen, N.S., Coll, L., Lof, M. (2011): Forest vegetation management under debate: an introduction. *European Journal of Forest Research* 130, pp. 1-5.
- Conrad, E., Christie, M., Fazey, I. (2011): *Is research keeping up with changes in landscape policy? A review of the literature*. *Journal of Environmental Management*, 92 (9), pp. 2097-2108.
- Edman, T., Angelstam, P., Mikusiński, G., Roberge, J.-M., Sikora, A. (2011): *Spatial planning for biodiversity conservation: Assessment of forest landscapes' conservation value using umbrella species requirements in Poland*. *Landscape and Urban Planning*, 102 (1), pp. 16-23.
- Flohre, A., Fischer, C., Aavik, T., Bengtsson, J., Berendse, F., Bommarco, R., Ceryngier, P., Clement, L.W., Dennis, C., Eggers, S., Emmerson, M., Geiger, F., Guerrero, I., Hawro, V., Inchausti, P., Liira, J., Morales, M.B., Oñate, J.J., Pärt, T., Weisser, W.W., Winqvist, C., Thies, C., Tschamtkke, T. (2011): *Agricultural intensification and biodiversity partitioning in European landscapes comparing plants, carabids, and birds*. *Ecological Applications*, 21 (5), pp. 1772-1781.
- Giménez-Casaldueiro, F., Gomariz-Castillo, F.J., Calvin, J.C. (2011): *Hierarchical classification of marine rocky landscape as management tool at southeast Mediterranean coast*. *Ocean and Coastal Management*, 54 (7), pp. 497-506.
- González-Olabarria, J.-R., Pukkala, T. (2011): *Integrating fire risk considerations in landscape-level forest planning*. *Forest Ecology and Management*, 261 (2), pp. 278-287.
- Jansen, J., Diemont, H. (2011): *Implementing natura 2000 in farmed landscapes: The serra da estrela, Portugal*. *Ekologia Bratislava*, 30 (2), pp. 199-215.
- Lindberg, G., Fahlbeck, E. (2011): *New forms of local collective governance linked to the agricultural landscape: Identifying the scope and possibilities for hybrid institutions*. *International Journal of Agricultural Resources, Governance and Ecology*, 9 (1-2), pp. 31-47.
- Lomba, A., Bunce, R.G.H., Jongman, R.H.G., Moreira, F., Honrado, J. (2011): *Interactions between abiotic filters, landscape structure and species traits as determinants of dairy farmland plant diversity*. *Landscape and Urban Planning*, 99 (3-4), pp. 248-258.
- Lupp, G., Höchtl, F., Wende, W. (2011): *"Wilderness" - A designation for Central European landscapes?* *Land Use Policy*, 28 (3), pp. 594-603.
- McKenzie, P., Cooper, A., McCann, T., Rogers, D. (2011): *The ecological impact of rural building on habitats in an agricultural landscape*. *Landscape and Urban Planning*, 101 (3), pp. 262-268.
- Morán-Ordóñez, A., Suárez-Seoane, S., Calvo, L., de Luis, E. (2011): *Using predictive models as a spatially explicit support tool for managing cultural landscapes*. *Applied Geography*, 31 (2), pp. 839-848.
- Moreira, F., Viedma, O., Arianoutsou, M., Curt, T., Koutsias, N., Rigolot, E., Barbati, A., Corona, P., Vaz, P., Xanthopoulos, G., Mouillot, F., Bilgili, E. (2011): *Landscape - wildfire interactions in southern Europe: Implications for landscape management*. *Journal of Environmental Management*, 92 (10), pp. 2389-2402.
- Nijnik, M., Miller, D., Nijnik, A., Fiorini, S., Vogt, N., Brondizio, E., Morrice, J. (2011): *Public participation for planning the sustainable use of natural resources and landscape change: Methodology development*. *International Journal of Interdisciplinary Social Sciences*, 5 (11), pp. 303-320.

- Ode, A., Miller, D. (2011): *Analysing the relationship between indicators of landscape complexity and preference*. Environment and Planning B: Planning and Design, 38 (1), pp. 24-38.
- Oles, T., Hammarlund, K. (2011): *The European landscape convention, wind power, and the limits of the local: Notes from Italy and Sweden*. Landscape Research, 36 (4), pp. 471-485.
- Palang, H., Spek, T., Stenseke, M. (2011): *Digging in the past: New conceptual models in landscape history and their relevance in peri-urban landscapes*. Landscape and Urban Planning, 100 (4), pp. 344-346.
- Pesch, R., Schmidt, G., Schroeder, W., Weustermann, I. (2011): *Application of CART in ecological landscape mapping: Two case studies*. Ecological Indicators, 11 (1), pp. 115-122.
- Rocchini, D., McGlenn, D., Ricotta, C., Neteler, M., Wohlgemuth, T. (2011): *Landscape complexity and spatial scale influence the relationship between remotely sensed spectral diversity and survey-based plant species richness*. Journal of Vegetation Science, 22 (4), pp. 688-698.
- Roth, V.M., Kruse, A., Kruckenberg, H. (2011): *European agricultural landscapes between cultural heritage and designable future [Europäische Agrarlandschaften zwischen kulturellem Erbe und gestaltbarer Zukunft: Klassifizierungsmodelle als Planungsgrundlage - Erkenntnisse aus dem Eucaland- Projekt]* Naturschutz und Landschaftsplanung, 43 (8), pp. 229-236.
- Saura, S., Estreguil, C., Mouton, C., Rodríguez-Freire, M. (2011): *Network analysis to assess landscape connectivity trends: Application to European forests (1990-2000)*. Ecological Indicators, 11 (2), pp. 407-416.
- Scott, A. (2011): *Beyond the conventional: Meeting the challenges of landscape governance within the European Landscape Convention?* Journal of Environmental Management, 92 (10), pp. 2754-2762.
- Schönhart, M., Schauppenlehner, T., Schmid, E., Muhar, A. (2011): *Analysing the maintenance and establishment of orchard meadows at farm and landscape levels applying a spatially explicit integrated modelling approach*. Journal of Environmental Planning and Management, 54 (1), pp. 115-143.
- Solymosi, K. (2011): *Indicators for the identification of cultural landscape hotspots in Europe*. Landscape Research, 36 (1), pp. 3-18.
- Solymosi, K. (2011): *Landscape perception in marginalized regions of Europe: The outsiders' view*. Nature and Culture, 6 (1), pp. 64-90.
- Winqvist, C., Bengtsson, J., Aavik, T., Berendse, F., Clement, L.W., Eggers, S., Fischer, C., Flohre, A., Geiger, F., Liira, J., Pärt, T., Thies, C., Tschardtke, T., Weisser, W.W., Bommarco, R. (2011): *Mixed effects of organic farming and landscape complexity on farmland biodiversity and biological control potential across Europe*. Journal of Applied Ecology, 48 (3), pp. 570-579.

6. Outlook

Workshop "Town in Landscape, People in Town"

Date: 30th November 2011

Place: Bratislava, Slovakia

Further information: <http://www.ekopolis.sk/en/news/418-town-in-landscape-people.html>

Territory and Environment : from representations to action

Date: 8th – 9th December 2011

Place: Tours, France

Further information: <http://citeres.univ-tours.fr/environnement/?lang=en>

EBONE final conference

Date: 12th – 13th March 2012

Place: Brussels, Belgium

Further information:

http://www.ebone.wur.nl/UK/newsagenda/agenda/EBONE_Final_Conference.htm

TEEB Conference 2012: Mainstreaming the Economics of Nature: Challenges for Science and Implementation

Date: 19th – 22nd March 2012

Place: Leipzig, Germany

Further information: <http://www.teeb-conference-2012.ufz.de/index.php?en=21742>

Planet under Pressure: New knowledge towards solutions

Date: 26th – 29th March 2012

Place: London, United Kingdom

Further information: <http://www.planetunderpressure2012.net/index.asp>

2nd Forum Carpathicum: From data to knowledge, from knowledge to action

Date: 30th May – 2nd June 2012

Place: Stará Lesná, Slovakia

Further information: http://uke.sav.sk/fc/fc_2012/FC_2012.html

X International Forum Le Vie dei Mercanti: Less/More Architecture, Design, Landscape

Date: 31st May – 2nd June 2012

Place: Naples and Capri, Italy

Further information: <http://www.leviedeimercanti.it/2012eng/>

BALWOIS 2012: International Scientific Conference on Water, Climate and Environment

Date: 28th May – 2nd June 2012

Place: Tours, France

Further information: <http://balwois.com/2012/>

Land Use in Transition: Potentials and Solutions Between Abandonment and Land Grabbing

Date: 20th – 22nd June 2012

Place: Halle, Germany

Further information: <http://www.iamo.de/forum0/forum2012>

XV. International Conference of Historical Geographers

Date: 6th – 10th August 2012

Place: Prague, Czech Republic
Further information: www.ichq2012.cz

3rd European Congress of Conservation Biology

Date: 28th August – 1st September 2012
Place: Glasgow, Scotland
Further information: <http://www.eccb2012.org/>

Hedgerow Futures Conference 2012

Date: 3rd – 5th September 2012
Place: Stoke-on-Trent, UK
Further information: <http://www.hedgmlink.org.uk/hedgerow-futures-conference-2012.htm>

3rd Moravian Conference on Rural Research EURORURAL '12: MULTIFUNCTIONAL RURAL DEVELOPMENT

Date: 10th – 14th September 2012
Place: Brno, Czech Republic
Further information:
<http://www.uniscape.eu/pagelmg.php?idCont=1309&idSez=16&idlink=55&lang=en>

Forthcoming events within other networks

UNISCAPE: the second Careggi seminar on rural landscape

Date: March 2012
Further information:
<http://www.uniscape.eu/pagelmg.php?idCont=1256&idSez=30&idlink=94&lang=en>

ECLAS: LE:NOTRE Landscape Forum

Date: 18th – 21st April 2012
Place: Antalya, Turkey
Further information: <http://www.le-notre.org/landscape-forum.php>

MRI: Synthesis Workshop on Qualities, Vulnerabilities, and Management of Ecosystem Services in Mountain Regions

Date: September 2012
Place: Davos, Switzerland
Further information: <http://mri.scnatweb.ch/mri-events/synthesis-workshop-on-qualities-vulnerabilities-and-management-of-ecosystem-services-in-mountain-regions>

PECSRL: The 25th session of the PECSRL (international conference)

Date: 2012
Place: Leeuwarden, Netherlands
Further information: <http://www.pecsrl.org/>

7. LE membership

Membership

The following institutes are now members of LANDSCAPE EUROPE:

Full members:

- The Institute of Landscape Ecology of the Slovak Academy of Sciences (ILESAS)
- Alterra Wageningen UR (Alterra)
- The Centre for Ecology & Hydrology (CEH)
- The Research Institute for Nature and Forest (INBO)
- Helmholtz - Zentrum für Umweltforschung GmbH (UFZ)
- Joint Research Centre (JRC)
- Aarhus University – National Environmental Research Institute (ENVSCI-AU)
- Cemagref, département Gestion des Territoires (Cemagref)

Associate members:

- The Norwegian Forest and Landscape Institute (NFLI)
- The University of Vienna, Department of Conservation Biology, Vegetation and Landscape Ecology (UNIVIE)
- The University of Bucharest (UNIBUC)
- The University of Tallinn, Centre for Landscape and Culture, Estonian Institute of Humanities (TU)
- The University of Salzburg (Z_GIS)
- Agricultural Economics Research Institute (LEI – Wageningen UR)
- The University of the Aegean (Aegean)
- The German Federal Agency for Nature Conservation (BfN)
- The Dortmund University of Technology (LLP)
- The Leibniz Institute of Ecological Urban and Regional Development (IOER)
- Charles University of Prague, Faculty of Science, Department of Physical Geography and Geo-ecology (KU)
- The University of Udine, Department of Crop and Environmental Science (DISAA)
- The University of Alcalá de Henares (UAH)

Executive Board

Current composition of the Executive Board:

- Alterra (NL): Bas Pedroli
- ENVSCI-AU (DK): Pia Frederiksen
- CEH (UK): Paul Scholefield
- UFZ (D): Christoph Görg
- Cemagref (F): Daniel Terrasson a.i.
- JRC (int): Maria Luisa Paracchini
- INBO (B): Geert de Blust
- TLU (EE): Hannes Palang
- ILESAS (SK): Peter Bezák

Network Co-ordinator: Peter Bezák (ILESAS, SK)

Website and Forum page

The website of LANDSCAPE EUROPE, www.landscape-europe.net, has up to date information on conferences, publications, international vacancies and other events. For more information on the website, please contact the webmaster (robert.kanka@savba.sk).