



1. *Introduction*
2. *Membership*
3. *Projects*
4. *Network News*
5. *Announcements*
6. *Outlook*

LANDSCAPE EUROPE

*Newsletter*

Issue No. 8 – April 2007

## *1. Introduction*

### **Desire**

The trunk of a huge poplar stands in the centre of the dining room of the dike house. Outside, fish soup is being prepared in a big pan on the fire. In the background the marshes on the landside of the dike. We have seen night herons there, small herons, sitting mysteriously in the willows and then silently flying away across the river. We too crossed the river, in a small boat crosswise against the current, the rising sun in our backs. The Danube here in Hungary is wide, an enormous plane of water stretching out to the cauliflower trees on the other bank. Large birds fly over the forest, difficult to recognise in the distance from a wobbling boat, but our guide Bela decisively utters a few Latin names. Lanner falcon, herons, farther away a white-tailed eagle.



The other bank is sandy, the tangle of roots of a heavy poplar, undercut by the currents, is silhouetted against the sky. High up into the roots there are pieces of straw, remnants of the last flood. We get out and walk up the beach. The tall flood forest is astonishingly open and light, the soil firm, we can walk through easily. Purposefully and silent Bela finds his way, he is evidently at home here, completely absorbed in the sounds of the forest. A little later between the trunks, further down, we see the glade of a silted up arm of the river. There are several great white and little egrets, and also a black stork, curiously shining, in the mud. After a while Bela stops, signals us to keep silent, and aims his

binoculars at the crown of a huge distant oak tree. After some moments of careful scrutiny I can make out the young of a white-tailed eagle. The nest has been there for 20 years, says Bela.

Over fish soup he tells us that this forest has always been a protected hunting area. This has saved these floodplains from reclamation. White-tailed eagles need peace and quiet and old oaks to nest. He himself has also become part of this landscape. I too feel the desire to be part of such a landscape.

*Bas Pedroli*

This is the 8<sup>th</sup> Newsletter of LANDSCAPE EUROPE, International Network of Expertise on Landscape. It brings you news from the members to the members but also to a wider audience of experts in landscape science in its broadest sense. More information on LANDSCAPE EUROPE you can find on our website: [www.landscape-europe.net](http://www.landscape-europe.net).

Please feel free to forward the newsletter to other interested people in the wide field of landscape science that seeks to integrate natural, social and economic research. If you do so, please ask them to mail ([landscape.europe@wur.nl](mailto:landscape.europe@wur.nl)) their contact information. If you no longer wish to be on our distribution list, inform us as well.

On behalf of LANDSCAPE EUROPE:

**Bas Pedroli** ( [Bas.Pedroli@wur.nl](mailto:Bas.Pedroli@wur.nl) )  
*secretary general*

**Dirk Wascher** ( [Dirk.Wascher@wur.nl](mailto:Dirk.Wascher@wur.nl) )  
*network coordinator*

## 2. LANDSCAPE EUROPE membership

### Membership

The following institutes are now members of LANDSCAPE EUROPE:

#### **Full members:**

- Alterra Green World Research
- Centre for Ecology & Hydrology (CEH)
- Cemagref
- Eidgen. Forschungsanstalt für Wald Schnee und Landschaft (WSL)
- Research Institute for Nature and Forest (INBO)
- Umweltforschungszentrum Leipzig-Halle (UFZ)
- Joint Research Centre (JRC)
- National Environmental Research Institute (NERI)

#### **Associate members:**

- Norwegian Institute of Land Inventory (NIJOS)
- University of Vienna Institut für Ökologie (IFO)
- University Western Hungary (UWH) Institute of Environmental Sciences, Sopron
- University of Bucharest (UNIBUC)
- University of Tallinn (TLU)
- Countryside Council Wales (CCW)
- University of Salzburg (Z\_GIS)
- Landbouw Economisch Instituut (LEI)
- University of the Aegean

### Executive Board

During the General Assembly, held on the 26<sup>th</sup> of January in Amsterdam, it was decided to welcome Mr. Hannes Palang as a member of the executive board. Ursula Schmitz of UFZ has agreed to propose new board member for UFZ a.s.a.p.

Current composition of the Executive Board:

- Alterra (NL): Bas Pedroli (general secretary)
- NERI (DK): Hanne Bach (treasurer)
- CEH (UK): Sandrine Petit
- UFZ (D): Ursula Schmitz (contact person)
- Cemagref (F): Daniel Terrasson
- JRC (int): Maria Luisa Paracchini
- INC (B): Geert de Blust
- TLU: Hannes Palang

Network Co-ordinator is Dirk Wascher (Wageningen, NL)

### Website and Forum page

The website of LANDSCAPE EUROPE, [www.landscape-europe.net](http://www.landscape-europe.net), has updated information on conferences, publications and international vacancies. For more information please contact the webmaster ([marion.bogers@wur.nl](mailto:marion.bogers@wur.nl))

### General Assembly

On the 26<sup>th</sup> of January the LANDSCAPE EUROPE General Assembly was held at the Beurs van Berlage in Amsterdam. A more detailed report can be found below in the Network News Section.

### 3. *Projects*

#### **A new landscape research programme in France**

By Daniel Terrasson, Cemagref

The French ministry of Ecology and Sustainable Development had launched in 1998 a first research programme called "Landscape and Public Policies", which ended in 2004. Two scientific events were organised, including the Bordeaux conference in December 2004. Several colleagues of LANDSCAPE EUROPE were members of the conference Scientific Committee. A comprehensive information on the programme is available on the following web-site, but mostly in French <http://www.ecologie.gouv.fr/Politiques-publiques-de-paysages.html>. Nevertheless the conclusions are translated in English and can be asked to the author.

Considering the good results of this programme, the ministry has decided to start a new initiative with a renewed content, but also with a wider opening to the European research community. In this second programme, called "Landscape and Sustainable development" each project has to include a partnership with at least one foreign research team. This obligation has to be stressed, as it is the first case in France for a programme funded from national resources. In other European countries it is probably rare too.

The programme has three main themes:

- **Landscape in the context of sustainability** (the meaning of sustainability applied to an evolving landscape; sustainability of landscape public policies; relationship between landscape and the three pillars of sustainable development);
- **Ability of present landscaping actions to achieve the objectives of the European Landscape Convention** (valuation of experiments; new methodologies);
- **Landscape economy** (new landscape market; regulatory tools; impact of landscape on local development; employment opportunities, theoretical deepening of concepts).

A first call for projects was launched in 2005, and 16 proposals were accepted, covering a wide range of issues: social and natural co-evolution in rural areas; political and institutional processes of World Heritage sites; conflicts between environmental and landscape policies around wind-farms; trans-borders cooperation; exceptional versus everyday landscapes; justice and landscape policies, sustainable management of natural resources, sustainability in the practises of landscape architects, sustainability of access in rural areas, etc.

The programme lead by Gérard Guillaumin (MEDD), Yves Luginbühl (Chairman of the scientific committee) and Daniel Terrasson (coordinator) will last for four to five years. Several international seminars or conferences are forecasted. Three events are organised in 2007: "*Ecology, aesthetic engagement and public sphere*" (Paris, 9-11 may 2007), "*Landscape economy*" Montpellier, 14-16 June 2007, a common meeting with the Landscape Research Group from UK, probably in November. A web-site will open before summer for further information.



## ATLAS Final conference on the 25<sup>th</sup> of January in Amsterdam

By Marion Bogers

In the beautiful atmosphere of the historic building Beurs van Berlage the final conference of the ATLAS project started off with a warm welcome by the project coordinator, Hannes Palang. Over the past 18 months hard work has been done by 10 project partners from various countries in Europe, resulting in more insight in the provision of education in sustainability and land use as well as an analysis of the needs for specific education from potential users. More than that the ATLAS project has produced a website where first of all a searchable list can be found of over 3000 courses in sustainability and land use. Secondly the website contains a interactive route planner to assist users in obtaining information regarding sustainability and land use that is tailor-made for their respective needs. The unique interactive tool is developed with a step-by-step approach and makes use of colourful and exciting photos as well as interesting pieces of information on a series of web pages. Each user is guided through the interactive route planner in a distinctive manner and in each case the initial entry point into the website dictates



The screenshot shows the ATLAS-eu.org website. At the top, there is a logo and navigation links: 'About ATLAS-eu.org', 'Inventory database', 'Road map', 'Glossary', 'Contacts', and 'Newsletter'. Below the navigation is a login section with fields for 'Username:' and 'Password:', and a 'Log in' button. The main content area is titled 'Interactive Road map' and contains a list of questions for users to select their interests. The questions are:

- Are you interested in interdisciplinary studies?
- Are you interested in Action Research?
- Would you like to study in foreign countries?
- Would you like to know more about landscape change?
- Do you want to increase your career opportunities?
- Do you want respect from your peers?
- Do you want to find your niche in the market?
- Do you want to develop commercial landscapes?
- Do you want to be the one who understands STA, SEA, SA, EA, etc?
- Are you interested in planning the LUS future?
- Do you want to help save the world?
- Would you like to take a master class with key opinion leaders in sustainability?
- Do you want to gain experience from cultural landscapes in Europe?
- Would you like to influence your landscape?
- Would you like to be part of the future cool people?
- Do you want to be heard?

On the right side of the page, there are three landscape images: a stone wall with a tree, a river flowing through a valley, and a rocky coastline with a blue sea.

the route to be taken. Each new user input further dictates the type of information to be gathered by the user on his way through the route planner. From an architectural outlook, the database is therefore constructed in such a way as to provide various search paths through the information chain in order to obtain an end result, which can be an appropriate course as well as information on EU policies, case studies or relevant research projects.

As part of the conference contributions were given from people active in relevant EU projects and/or university teaching:

- Marjan van Herwijnen of SustainabilityA-test
- Maria Teresa Pinto Correia of The PERISCAPE group and The *Landscape Ambassador* International Course
- Roy Haines Young of University of Nottingham
- Michael Pihlström of the E-lup project
- Marc Antrop of the university in Ghent

From their different perspectives all contributors mentioned to be very pleased with the outcome of the ATLAS project, which will stimulate the development of suitable courses and help users to find the information needed. During the conference Wageningen Business School already presented a preliminary setup of such a course. Of course there is also room for improvement and steps are taken to ensure that the initiative can be continued in the future. The three Networks, LANDSCAPE EUROPE, Landscape Tomorrow and ELCAS, which are the initiators of the ATLAS project, have committed themselves to actively promote, update and improve the site for at least one year. A business plan was written to this extend.

## 4. Network News

**General Assembly Friday 26 January 2007, Beurs van Berlage, Amsterdam**

*By Marion Bogers*

### **Achievements of the LANDSCAPE EUROPE Network in 2006 were:**

- The ELCAI project was finalised and a excellent report published. There is continuous feedback on this project, and the resulting recommendations and the map are being used in numerous other projects and initiatives.
- The report of the Leipzig Conference on multifunctional landscape was published by LANDSCAPE EUROPE and distributed among the members and other interested parties.
- Two Newsletters were issued.
- Many meetings were attended by members on behalf of LANDSCAPE EUROPE, including those of several other EC funded projects, of the European Landscape Convention, and the French National Landscape Research programme. Dirk Wascher acted as invited professor at Ann Arbor University, introducing LANDSCAPE EUROPE achievements.
- The initiative for a “beautiful book” on European Cultural Landscapes was taken, to be presented at the IALE World Conference.
- Initiatives were taken to organise a PhD-course, a symposium and a poster session in the IALE World Conference.
- the ATLAS project is approaching its finish. A website has been developed for educational and training provision in the area of land use and sustainability ([www.atlas-eu.org](http://www.atlas-eu.org)). On 25 January this website was officially launched and the reactions were enthusiastic. The three networks (LANDSCAPE EUROPE, ECLAS and Landscape Tomorrow) have decided to join efforts to develop this website into a self-sustainable instrument.
- The SENSOR project is following a steady course, where the input of LANDSCAPE EUROPE could be profiled a bit more. There is opportunity for that in the last two years.

### **Presentation by Teresa Pinto Correia on European Landscape Research**

On the basis of three well elaborated practice examples from Portugal, Teresa Pinto Correia makes a strong plea to fundamentally include public participation in landscape research and landscape planning. Participation should be covered by professionals but is often forgotten, or postponed until after the end of the project. She reported some impressive cases in which landscape is not perceived as an element of intrinsic value by local people, who rather choose for large scale tourist developments or other activities with an economical future. Awareness raising is necessary. Value of the landscape is appreciated by tourists, less by local people. In the discussion, it is confirmed that comparable tendencies can be observed in many countries. In some north-western countries in Europe landscape values have been re-discovered by urban inhabitants, causing problems of understanding with the local people.



### **Presentation by Bas Pedroli: Crisis in European Landscape**

Bas Pedroli focuses on the challenges for the EU in the area of landscape. Clear links exist between landscape and public health, but neither landscape ecologists nor policy makers are always aware of it. Since the future quality of vast landscape areas in the enlarged European Union are at stake, the EC should develop a policy strategy in the area of landscape itself. In the discussion it is mentioned that conferences on social aspects of landscape do exist, but that landscape scientists seldom attend them. Exchange between neighbouring countries is on-going; European Landscape Convention is effective here. Certain achievements have been reached informally, but Landscape in policy at EU level is non-existing, focus in natural resources management is on nature areas.



### **LANDSCAPE EUROPE Action Plan**

2007 is a year of profiling LANDSCAPE EUROPE through publications and other actions. Project development should not only be focused on EU funding. National funding could be used to cooperate with partners in other countries, dealing with comparable research questions. Some pilot projects could be started.

On Tuesday 10<sup>th</sup> of July the LANDSCAPE EUROPE book "Europe's Living Landscapes," (see below) will be presented at the IALE conference. LANDSCAPE EUROPE is sponsoring young scientist/students to take part at IALE conference. LANDSCAPE EUROPE organises a symposium, aimed to result in publications. The English proceedings of Bordeaux meeting can be launched there. LANDSCAPE EUROPE could organise a creative promotional event.

LANDSCAPE EUROPE will organise a High Level Conference on a European Landscape Research and Policy Agenda in Brussels in 2008. The organisation of this conference requires LANDSCAPE EUROPE to develop a draft Research and Policy Agenda. The PEER network supports this initiative (see below, section 5).

### **A new LANDSCAPE EUROPE publication in 2007: the Europe's Living Landscapes**

*By Anne van Doorn*

As announced in the previous LE-newsletter of October 2006 the LANDSCAPE EUROPE Network is momentarily working on a new publication to be launched at the IALE conference in 2007 ([www.IALE2007.com](http://www.IALE2007.com)). At present, the chapters to be published are selected and almost ready for the final print proofs. This selection gives an interesting overview of the functions and values of European cultural landscapes and inspiring examples of good landscape practice and research. No less than twenty cultural landscapes from all over Europe are presented. The French case deals with the multifunctionality of the agricultural landscapes of the Massif Central in relation to its representation on cheese labels. In Norway the potential of summer farms for sustainable agricultural and rural development is presented, while the Spanish case discusses how a medieval agro-forestry system still survives in the 21<sup>st</sup> century. Next to the case studies, the areas concerned are related to the European Landscape Typology map (LANMAP) and to the recently produced map on High Nature Value farming. The editorial commission consists of Bas Pedroli, Geert de Blust, Maria Luisa Paracchini, Dirk Wascher and Anne van Doorn ([anne.doorn@wur.nl](mailto:anne.doorn@wur.nl)).

## A new research centre at the Tallinn University

By Helen Sooväli, Associate professor in human geography

The Centre for Landscape and Culture was established at Tallinn University, the Estonian Institute of Humanities in January 2007. It is the first time in Estonian geographical tradition when geography has moved away from natural sciences to humanities. The aim of the centre is twofold: to be an umbrella organization for the projects dealing with landscape studies and in the future to focus also on teaching courses and curricula related to landscape studies. The centre received financing from Estonian Science Foundation for six years to perform interdisciplinary project called 'Landscape and practice'. The primary aim of the project is to explore landscape practice as a strategic dimension for the study of the complex interactions between landscape and heritage. To do that we use the combined approaches of (cultural) geography, ethnology/anthropology and folklore studies. The hypothesis of the research framework argues that societal changes cause ruptures/discontinuities that are inscribed in landscapes through practice; the changes may result changing of patterns and representations, making of heritage, but also in changing practices themselves. We study ruptures in two ways: the process of the societal change: how the societal changes are transmitted into changes in the landscape (practice change) and; the consequences of the change: how the changing practices are reflected in patterns, processes, functions, contexts. The project concentrates on the interwoven terms of landscape, practice and heritage. *Landscape*, being the core term in geography, is understood in our project as an area as perceived by people, whose character is the result of the action and interaction of natural and/or human factors. This definition assumes that landscapes evolve through time and that a landscape is a whole, where natural and cultural components are studied together, not separately. Moreover, landscape is anchored with human life, it is not only perceived through gaze, the way Anglo-American cultural geography insisted in the 1980s, but is practiced and dwelled as seen in ethnology, anthropology and the 'Nordic approach to landscape'. In heritage studies, Lowenthal has shown how the morphology of landscape as a material phenomenon is understood in the context of landscape as an area of cultural activity, a political landscape in its broadest meaning.

The centre embraces researchers, senior researchers as well as PhD and Master's students offering a broad variety of possibilities to take up initiatives as well as seminars and courses around themes of space and landscape. Head of the centre is Hannes Palang (who is also the director of the Estonian Institute of Humanities at Tallinn University). The Centre for Landscape and Culture is a new institution open up for co-operation with universities and research centres of similar interests.



## PhD seminar "Reading the landscape: essentials for understanding and planning landscapes at European level"

Éva Konkoly-Gyuró, Ágnes Tirászi and Sándor Jombach.

The PhD seminar was held the 24-27. October 2006 at the University of West Hungary in Sopron, hosted by Doctoral School of Environmental Sciences and was organized by Dr. habil Éva Konkoly-Gyuró from the Institute of Environmental Sciences. The guest lecturers arrived from the Institute of Landscape Management of the Albert-Ludwigs University of Freiburg (Dr. Bettina Burkart, Dr. Franz Höchtl, Kristina Langarova) and participating students were coming from three Hungarian universities with different backgrounds: environmental engineering, landscape architecture and landscape management .



The forested hills of Sopron, Sándor Jombach

The aim of the seminar was to get an overview on the different landscape approaches and concepts and the relationships of the landscape elements. Besides the several European examples presented by the lecturers, students elaborated on the landscape of the medieval town Sopron. Their course ended with presentations of student's group work. The groups proposed evaluation of important habitat structures concerning the surrounding of Sopron with regard to the future development of the town. They also developed a method for participatory planning and for presenting and improving understanding of the landscape values for inhabitants and tourists. The seminary brought together young researchers and teachers for an exciting three days dialogue and discussions that we look forward to continue in the future.



Panorama of Sopron, Kristina Langarova

## Fall Term 2006 Guest Professorship at Michigan University, USA

By Dirk Wascher

Last year, from August 15<sup>th</sup> until December 22<sup>nd</sup>, I had the opportunity of teaching a graduate course on landscape planning and analysis in combination with an evening seminar on European landscape policies at the School of Natural Resources and Environment (SNRE) of the University of Michigan, Ann Arbor, USA. Starting back in 2004 with research undertaken with Professor Dr Joan Nassauer<sup>1</sup>, the collaboration continued in a very different way: it was the first time that I



Campus Landscape Studio at Dana Hall, Central

<sup>1</sup> Nassauer, J. & Wascher, D. 2006. *The Globalized Landscape: Rural Landscape Change and Policy in the United States and European Union*. In: Westcoat, J.(ed) 2006. *Places of Power*.



gave high-level academic lectures – and in combination with GIS-studio classes. I was invited to change the past structure and priorities of the GIS class by introducing issues and approaches that can be considered as ‘typical’ for my work in the Netherlands or at the European level. I hence decided to divide the three main course blocks the following way:

1. Landscape Character Assessment, applied to the direct surroundings of Ann Arbor;
2. Landscape Indicator Assessment on state and trends in same area;
3. Landscape Change Scenarios for parts of America that needed to be proposed by the students.



***Final project presentation for Evening Seminar***

There were 25 students in my class, most of them hard working and committed persons, not only a few were of Asian origins. In the beginning the students were clearly struggling with the notion of a ‘cultural landscape’ – understandable since this concept does not belong to the day-to-day concerns of Americans. As Dan Brown, a remote sensing expert of the faculty put it: “Americans take pride in changing and mixing everything up, not really in

maintaining old characteristics.” I don’t know whether it was my insistence, my arguments or for other reasons, but the students picked it finally up, made the best of it and since the surroundings of Ann Arbor are actually quite rural and in a certain sense a bit of a European scale and feel to it, they even really got into it.

In October, I also presented a special lecture for a wider audiences as part of the on the SNRE-lecture series on the EU Integrated Project SENSOR and the landscape tools we are developing – it found great interest, especially among natural resource specialists and socio-economists. It also showed, that sustainability impact assessment is rather unknown in the US.

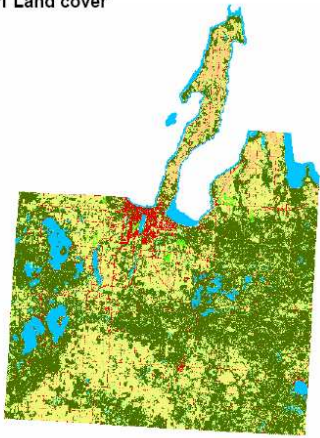
The last project on landscape change scenarios was inspired by a large variety of contemporary environmental issues throughout the whole of the US: urban sprawl, agricultural intensification, groundwater depletion, loss of wetlands, green roof development, salmon river management, and climate change. Due to the impact of Al Gore’s Oskar-winning documentary (the film was strongly promoted and screened free of charge at the University), two students got inspired to model the impact of climate change on the increase of the seawater level on the one hand, and decrease of lake water level on the other hand. The results belonged to some of the best project works so that we decided to turn them in for a university competition in the category of climate change research. After my return to the Netherlands, I learned that the two students, Emily Marshall<sup>2</sup> and Jennifer Dowdell<sup>3</sup> the first and third price in the competition. That made me really proud and happy.

---

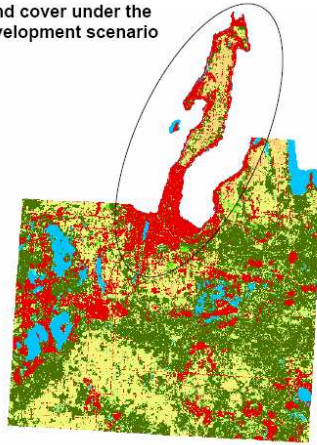
<sup>2</sup> Regional Effects of Climate Changes on the Great Lakes Shoreline - Landscape Change Scenarios on Urbanization and Nature Conservation for Grand Traverse County, Michigan

<sup>3</sup> Global Change: Effects of sea level rise on land uses in Maryland along the Lower Eastern Shore of the Chesapeake Bay: 3 Scenarios

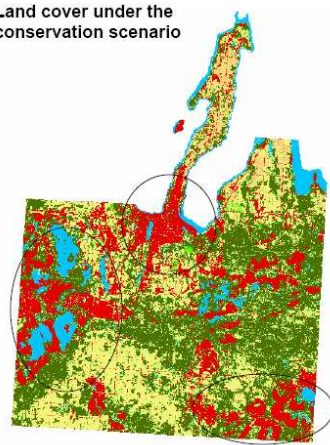
2001 Land cover



Land cover under the development scenario



Land cover under the conservation scenario



**Results**

Based on the projected 64% population growth estimate and the 8:1 ratio of land development to population growth, built-up land in Grand Traverse County is estimated to increase by 512%. Built-up land cover will increase from 5% of the county's total land area to 22% of the land area. The above landscape futures describe two plausible scenarios of where development may occur within the county. These futures also consider how climate change may influence where land is developed.

Under the development scenario, built-up area is clustered along the shoreline in the northern part of the county. Development has largely moved into the newly exposed shoreline area. In contrast, built-up areas in the conservation scenario are more spread out. Three main clusters of development emerge. Development in the western area, the southeastern corner, and the southern portion of the peninsula. Development in the conservation scenario has more often than not remained outside of the newly exposed shoreline area. Therefore, the landscape future from the conservation scenario may also represent where development would occur in the county if the lake levels do not decline.

**Excerpt from the Lake Michigan climate change scenarios (Marshall 2006)**

## 5. Announcements

### PEER Conference: Landscapes - Fabrics for Weaving a Sustainable Future

By Dirk Wascher

#### A High Level European Conference on Landscape

During the last Director's Board meeting of the Partnership for European Environmental Research (PEER), the umbrella body under which LANDSCAPE EUROPE is planning and implementing its European research agenda, a proposal to schedule a high level European conference on landscapes for May 2008 has been unanimously approved by all directors. While the LANDSCAPE EUROPE Secretariat will be the organizing body of this initiative, LANDSCAPE EUROPE members are of course invited to join our efforts. The intention is to provide LANDSCAPE EUROPE with wider European visibility in the identification of key research objectives. Aim would be to discuss the research and policy needs for the sustainable development of our landscape environment in Europe, and define an appropriate strategy to accommodate these needs. To facilitate this process, a *Blueprint for a European Landscape Research and Policy Strategy* will be developed by LANDSCAPE EUROPE experts, to be presented and discussed in the Conference. The 'blueprint' will address the following research and policy issues:

#### Landscape Adaptation

Landscape functions can be considered the central future topic when examining the question how landscapes will be able to adapt to large-scale transition processes such as climate change. Tackling concrete, region-specific dimensions of sustainability. More regional specifications for landscape functions and thresholds need to be developed.

#### Landscape Planning in the Light of Climate Change

The scientific and technical knowledge base of landscape offers the opportunity to move from the analytical process of assessing sustainable development towards the society-driven goals of sustainable design and planning in support of adaptation and mitigation.

#### Landscape-level Communications

The inherent complexity of socio-economic and environmental processes cannot be overcome by pure aggregation or simply up- and downscaling exercises, but by introducing new communication linking people to space and space to people. The landscape approach is the only discipline that has build up experience in this field by making use of visualisation techniques, typologies and participative approaches bridging the local and regional with the national and global.

It was agreed that the conference of the 'landscape pillar' should seek synergy with PEER's concerted action on "*Climate change adaptation, mitigation and effects on land use*", which will be officially launched by initiator UFZ during the event of the conference "Sustainable Neighborhood – from Lisbon to Leipzig through Research" in Leipzig (May 8<sup>th</sup> to 10<sup>th</sup> 2007). The conference with the tentative title "*Landscapes – Fabrics for Weaving a Sustainable Future*" is meant to draw the attention by high-level representatives of both the European as well national and regional policy world. The location still needs to be decided but should be close to European policy institutes.

## IALE World Congress: LANDSCAPE EUROPE Symposium

By Dirk Wascher

Due to the recently emerging political quest for multi-functional land use strategies and due to scientific advances in the development of ex-ante sustainability impact assessments tools, both landscape character and landscape functions have entered the mainstream European research agenda. Two of Europe's leading research networks - LANDSCAPE EUROPE and Landscape Tomorrow – are engaged in close collaboration to provide consistency and synergy in the implementation of projects such as SENSOR (Sustainable Impact Assessment for Multi-functional Land Use Scenarios), ELCAI (The European Landscape Character Initiative), ATLAS (Action for Training in Land Use and Sustainability), MEA-Scope and Multi-Agri (socio-economic aspects of multifunctional agriculture). The Symposium will present the most recent advances in the tool development for assessing landscape character and functions, as well as present visions for designing a sustainable future.

The 4-hours Symposium is organized under Nr. 25 and is scheduled for Tuesday July 10th, the first part 10:00 – 12:00h and the second part after lunch from 13:30 to 15:30h. The proposed contributions<sup>4</sup> to this symposium are as follows:

Landscape Character in the light of multifunctional land use	K. Helming, M. Perez-Soba, D.M. Wascher
European Landscape Typologies as Reference Base for Data on Cultural Heritage and Traditional Knowledge Systems in the Mediterranean	T. Kizos
From Landscape Character Assessment to Sustainable Design – Tools for Planning and Policy	D. M. Wascher
Risk and vulnerability of landscape identity	É. Konkoly-Gyuró
Region-specific landscape classification: the MEA-scope modeling approach in three European Landscapes	F. Ungaro, C. Kjeldsen, T. Dalgaard, M. Damgaard, K. Happe
Comparative review of European national and international landscape classifications with regard to future applications.	G.Groom, D.Wascher
The role of Landscape Character and Function Analysis in higher education in Europe: the ATLAS experience.	B. Pedroli, H. Palang
Dangerous Natural Phenomena in the Landscapes of the Ukrainian Carpathians	A. Melnyk
Defining and mapping the landscapes of Italy	C. Blasi, D. Guida, V. Siervo, M. Paolanti, L. Michetti, G. Capotorti, D. Smiraglia
Developing a science-based approach for delineating Natural Heritage System in Southern Ontario	D.Puric-Mladenovic, S Strobl
Habitat opportunity mapping at the landscape scale in the UK	G.H. Griffiths, I.N. Vogiatzakis
The assessment of landscape diversity for the purposes of spatial organisation of tourism: the case study of Brest region	I. I. Schastnaya
Landscape characterization in Belgium: temporal differences and integration of different scale levels	V. Van Eetvelde, M. Antrop

<sup>4</sup> Contributions with an (\*) mark confirmations by the authors; (\*\*) marke the existence of abstracts.

## 6. Recent Publications

- Antrop M. (2006). *Sustainable landscapes: contradiction, fiction or utopia?* Landscape and Urban Planning 75 (3-4): 187-197.
- Aznar O., Guerin M., Jeanneaux P., avec la collaboration de Roche C., Bretiere G., Herviou S. - 2006, Quels indicateurs mobiliser pour les politiques environnementales locales ? Une approche à partir des services environnementaux et des conflits d'usage, *Géographie, économie, Société*, 8, p. 369-384.
- Aznar O., Guerin M., Jeanneaux P., avec la collaboration de Herviou S. et Roche C., 2006 - La mise en œuvre de politiques environnementales par des acteurs locaux. Étude sur une zone d'étude située en France, *Revue canadienne des sciences régionales*, XXIX (1), printemps 2006, p. 93-105.
- Bastian O., R. Krönert & Z. Lipský (2006). *Landscape Diagnosis on Different Space and Time Scales – A Challenge for Landscape Planning*. Landscape Ecology 21 (3): 359–374.
- Blaschke, Th. (2006). *The role of the spatial dimension within the framework of sustainable landscapes and natural capital*. Landscape and Urban Planning 75 (3-4): 198-226
- Buijs A.E., B. Pedrolí & Y. Luginbühl (2006). *From Hiking Through Farmland to Farming in a Leisure Landscape: Changing Social Perceptions of the European Landscape*. Landscape Ecology 21 (3): 375–389.
- De Groot, R. (2006). Function-analysis and valuation as a tool to assess land use conflicts in planning for sustainable, multi-functional landscapes. Landscape and Urban Planning 75 (3-4): 175-186.
- Deuffic P. - 2006. Après les priorités du jour, le paysage... Enquête sur un enjeu flou pour les services forestiers . *Revue Forestière Française*, vol. 58, n°3, p. 229-244
- Deuffic P., Candau J. - 2006. Farming and landscape management: how french farmers are coping with the ecologization of their activities. *Journal of Agricultural and Environmental Ethics*, vol. 19, p. 563-585
- Groom G., C. A. Múcher, M. Ihse & T. Wrba (2006). *Remote Sensing in Landscape Ecology: Experiences and Perspectives in a European Context*. Landscape Ecology 21 (3): 391–408.
- Haines-Young R., C. Watkins, C. Wale & A. Murdock (2006). *Modelling natural capital: The case of landscape restoration on the South Downs, England*. Landscape and Urban Planning 75 (3-4): 244-264.
- Jongman R.H.G., R.G.H. Bunce, M.J. Metzger, C.A. Múcher, D.C. Howard & V.L. Mateus (2006). *Objectives and Applications of a Statistical Environmental Stratification of Europe*. Landscape Ecology 21 (3): 409–419.
- Käyhkö N. & H. Skånes (2006). *Change trajectories and key biotopes—Assessing landscape dynamics and sustainability*. Landscape and Urban Planning 75 (3-4): 300-321.
- Kizos T., and Koulouri M. (2006) Agricultural landscape dynamics in the Mediterranean: Lesvos (Greece) case study using evidence from the last three centuries, *Environmental Science and Policy*, Vol. 9(4), pp. 330-342 .
- Klug, H. (2006): The Leitbild concept: A holistic transdisciplinary approach for landscape planning. PhD Thesis submitted to the University of Salzburg, June 2006
- Opdam P., E. Steingröver & S. Van Rooij (2006). *Ecological networks: A spatial concept for multi-actor planning of sustainable landscapes*. Landscape and Urban Planning 75 (3-4): 322-332
- Palang H., A. Printsman, É. Konkoly Gyuró, M. Urbanc, E. Skowronek & W. Woloszyn (2006). *The Forgotten Rural Landscapes of Central and Eastern Europe*. Landscape Ecology 21 (3): 347–357.
- Pedrolí B., T. Pinto-Correia & P. Cornish (2006). *Landscape – What's in it? Trends in European Landscape Science and Priority Themes for Concerted Research*. Landscape Ecology 21 (3): 421–430.

- Pinto-Correia T., R. Gustavsson & J. Pirnat (2006). *Bridging the Gap between Centrally Defined Policies and Local Decisions – Towards more Sensitive and Creative Rural Landscape Management*. *Landscape Ecology* 21 (3): 333–346.
- Potschin M.B. & R.H. Haines-Young (2006). *Landscapes and sustainability*. *Landscape and Urban Planning* 75 (3-4): 155-161.
- Potschin M. & R. Haines-Young (2006). “Rio+10”, *sustainability science and Landscape Ecology*. *Landscape and Urban Planning* 75 (3-4): 162-174.
- Van der Knaap, W.G.M. & Van der Valk, A. (2006) *Multiple Landscape: Merging past and present*. ISBN 90 8585 109 2 / 978 90 8585 109 7, ISOMUL 2006, 230 pp.
- Van Elsen, Th., A. Günther & B. Pedroli (2006): *The contribution of care farms to landscapes of the future. A challenge of multifunctional agriculture*. In: Hassink & Van Dijk (eds.); *Farming for Health* Proceedings of the Frontis Workshop on Farming for Health Wageningen, The Netherlands, 16 -19 March 2005. Frontis Series Vol. 13. Springer (in press). see [www.wageningen-ur.nl/frontis/](http://www.wageningen-ur.nl/frontis/)
- Vollet D., Guérin M. - 2006, Effets économiques du paysage sur le développement régional, Illustration à partir d'une zone rurale française, le Pays de la Météorite, *Revue Canadienne de Science Régionale*, XXVIII, 3, p. 329-355.

## *7. Outlook*

### **Concepts, Methods and Tools for Conservaton Status Assessment, reporting and monitoring**

Date: 25th-27th of April 2007

Place: Roskilde, Denmark

Organisers: PEER, NERI

Further information: <http://peern2kws07.dmu.dk/>

### **Sustainable Neighbourhood – from Lisbon to Leipzig through Research (L2L)**

Date: 8-10 May 2007

Place: Leipzig, Germany

Organisers: Federal Ministry of Education and Research (BMBF)

Further information: [http://www.fona.de/de/3\\_akteure/forum\\_2007/index.php?lang=eng](http://www.fona.de/de/3_akteure/forum_2007/index.php?lang=eng)

### **Environnement, engagement esthétique et espace public : les enjeux du paysage**

Date: 9-11th of May 2007

Place: Paris, France

Organisers: Laboratoire Dynamiques Sociales et Recomposition des Espaces

Further information: <http://ladyss.com/>

### **Globalisation and Landscape Architecture: Issues for Education and Practice**

Date: 3-6th of June

Place: St Petersburg, Russia

Organisers: St.Petersburg State Forest Technical Academy

Further info: <http://ftacademy.ru/UserFiles/File/landsh2007/LandshaftDesignFTA.htm>

### **The Second Workshop on Landscape Economics**

Date: 14 – 16th of June, 2007

Place: Montpellier, France

Organisers: INRA

Further information: <http://www.ceep-europe.org/workshop.php>

### **Landscape classification, theory and practice**

Date: 15th – 17th of June 2007

Place: Warsaw, Poland

Organisers: The Faculty of Geography and Regional Studies of the Warsaw University and the Polish Association of Landscape Ecology (PAEK)

Further information: Jerzy Lechnio, [landscape.wgsr@uw.edu.pl](mailto:landscape.wgsr@uw.edu.pl); [jrlechni@uw.edu.pl](mailto:jrlechni@uw.edu.pl)

### **Landscape and Rural Heritage**

Date: 21-22nd of June 2007

Place: Sibiu, Romania

Organisers: European Landscape Convention

Further info: [http://www.coe.int/t/e/Cultural\\_Co-operation/Environment/Landscape](http://www.coe.int/t/e/Cultural_Co-operation/Environment/Landscape)

### **IALE World Congress, 25 years Landscape Ecology: Scientific Principles in Practice**

Date: July 2007

Place: Wageningen, the Netherlands

Organisers: Alterra

Further information: <http://www.landscape-ecology.org/>

### **XXIInd Congress of the European Society for Rural Sociology: “Mobilities, Vulnerabilities and Sustainabilities: New questions and challenges for rural Europe”**

Date: 20-24 August 2007

Place: Wageningen, the Netherlands

Organisers: Working group on Landscape Change and Rural Development in Europe

Further information: [www.esrs2007.nl](http://www.esrs2007.nl)

**IFLA World Congress 2007**

Date: 27-31st of August 2007

Place: Kuala Lumpur, Malaysia

Organisers: IFLA

Further information: [www.ifla2007.com](http://www.ifla2007.com)

**Monitoring the effectiveness of nature conservation**

Date: 3rd-6th of September 2007

Place: Birmsdorf, Switzerland

Organisers: Swiss Federal Research Institute WSL

Further information: [http://www.wsl.ch/event\\_07/monitoring/](http://www.wsl.ch/event_07/monitoring/)

**Open space: people space 2 - Innovative Approaches to Research Excellence in Landscape and Health**

Date: 19-21 September 2007

Place: Edinburgh, United Kingdom

Organisers: School of Landscape Architecture at Edinburgh College of Art and the School of the Built Environment at Heriot-Watt University

Further Information: <http://www.openspace.eca.ac.uk/>

**Science and Education of Land Use: A transatlantic, multidisciplinary and comparative approach**

Date: 24-26 September 2007

Place: Washington DC, USA

Organisers: Interuniversity consortium for agricultural and related sciences in Europe

Further information: <http://www.nercrd.psu.edu/TALUC/>

**18th ECLAS Conference: Landscape Assessment - From Theory to Practice: Applications in Planning and Design.**

Date: 10-14 October 2007

Place: Belgrad, Serbia

Organisers: ELCAS

Further information: <http://www.eclaserbia2007.org/>

**SUBSCRIBE-UNSUBSCRIBE**

If you wish to subscribe or unsubscribe this newsletter, please send us an email [landscape.europe@wur.nl](mailto:landscape.europe@wur.nl).

**LANDSCAPE EUROPE 's E-Newsletter**

c/o Marion Bogers, Network Office

P.O. Box 47

6700 AA WAGENINGEN

The Netherlands

Tel: + 31 317 477768 Fax + 31 317 419000

E-mail: [landscape.europe@wur.nl](mailto:landscape.europe@wur.nl)

Website: <http://www.landscape-europe.net>

Newsletter on-line at: <http://www.landscape-europe.net>