



## LANDSCAPE EUROPE Newsletter – February 2015

---

Dear Landscape Europe Network readers,

We have prepared a new issue of the Landscape Europe News this time focused mostly on recent publications.

In this issue you can find:

- information about interesting **project FORECOM**
- two new **offers for free positions**
- more new **events**
- **call for papers** for special issue and Symposium on Sustainable Planning Approaches for New Urban Pheripheries
- and finally a list of **recent publications**.

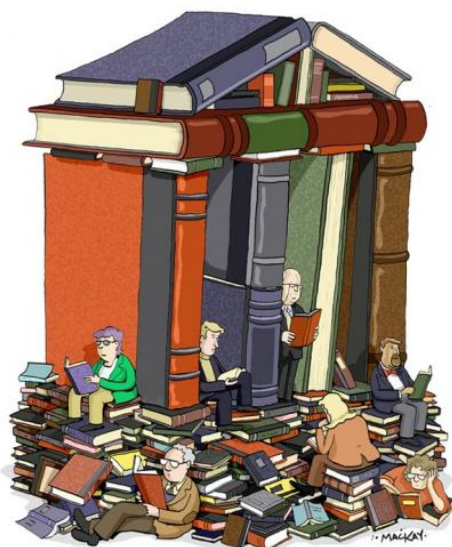
I would like to thank you those who informed us about new job offers, events and projects.

In case, you would like to support us with new information for the next issue, please do so.

Wishing you interesting reading and looking forward to receive your comments and inputs for the next issue of the LE-News.

With kindest regards

**Jana Borovská and the ILE SAS team**  
*Network coordination Office*



[http://bookcoverings.com/cartoon-reading-book/fr.toonpool.com\\*user\\*1292\\*files\\*books\\_books\\_books\\_184965.jpg/www.startimes.com\\*f.aspx=27596338/](http://bookcoverings.com/cartoon-reading-book/fr.toonpool.com*user*1292*files*books_books_books_184965.jpg/www.startimes.com*f.aspx=27596338/)

---

## PROJECT FORECOM

---

### FORECOM – forest cover changes in mountainous regions – drivers, trajectories and implications



By **Dominik Kaim** ([dkaim@gis.geo.uj.edu.pl](mailto:dkaim@gis.geo.uj.edu.pl))

Over the past decades agricultural land in Europe has declined and forest area has expanded considerably. Recent trends of land abandonment

have been most pronounced in marginal areas, for example in the mountains, like the Alps and the Carpathians, where agriculture became economically inefficient resulting in a decrease of cropland or grassland area and an increase of forest cover. At the same time, the potential upper tree line was shifting upward as a consequence of global warming. Despite their importance, spatially accurate large-scale and long-term reconstructions of forest cover changes in the Swiss Alps and the Polish Carpathians so far have been missing for both mountain regions, and underlying driving forces of the forest cover change trends are still insufficiently understood.

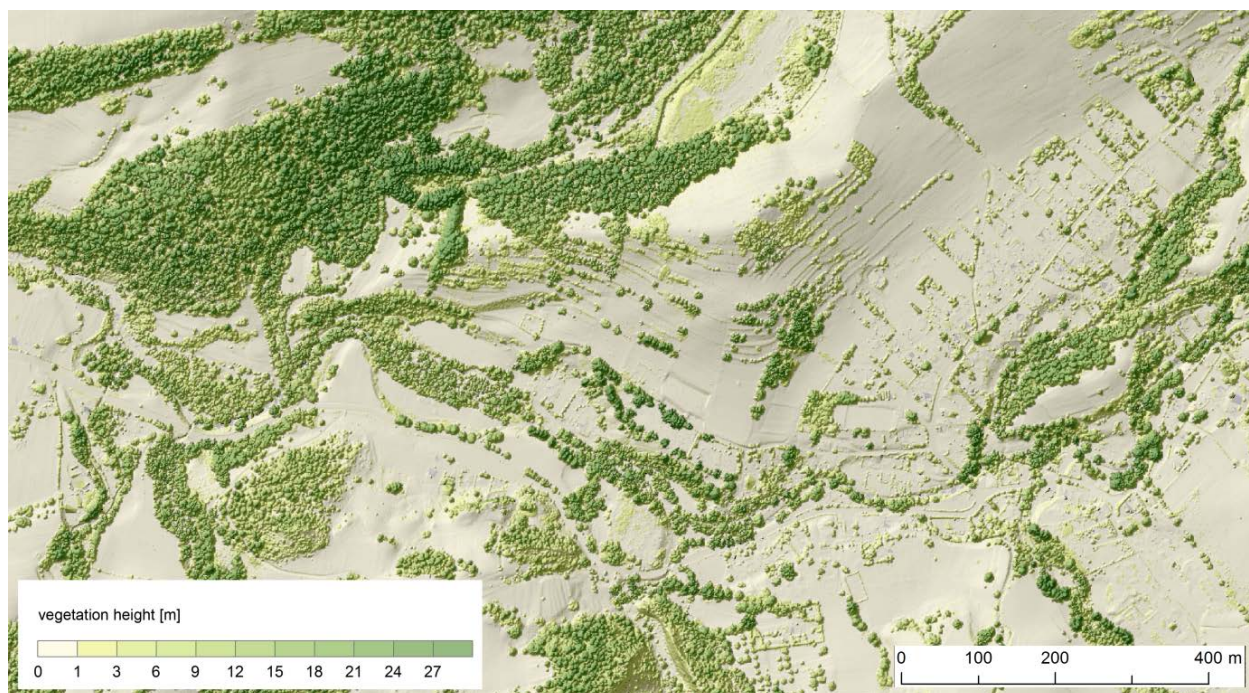


Fig. 1 Vegetation mapping based on airborne laser scanning, the Polish Carpathians, 2012

Aim of the FORECOM project is to improve understanding of past, present and future forest cover changes in the Swiss Alps and the Polish Carpathians in the context of land use and

climate changes. The project is carried out by research teams from the Institute of Geography and Spatial Management, Jagiellonian University, Poland, and Swiss Federal Research Institute for Forest, Snow and Landscape Research (WSL), Research Unit Land Use Dynamics. It started in June, 2012, and will end in May 2016.

**The FORECOM project has the following objectives:**

[1] to identify trends in forest cover change over the past 150 years for the Polish Carpathians and the Swiss Alps;

[2] to quantify the relative contribution of climate and land use to the past forest cover change;

[3] to develop combined climate and land use change scenarios for projecting future forest cover change;

[4] to assess important implications of forest cover change: historical and future trends in forest carbon pools and potential impacts on biodiversity.

To date, works on historical forest cover reconstruction in the last 150 years have been realized. As a part of this task, accompanying uncertainties were also identified (for details [see the paper](#)). Currently our efforts are focused on identification of the drivers of [the past](#) and future forest cover changes as well as assessment of the land abandonment rates and recognition of [natural succession hotspots](#). In the following months, measures on the quantification of implications of forest cover change on carbon pools and biodiversity are planned.

The FORECOM project will contribute to a better understanding of complex interactions between the biotic, climatic and human dimensions of land cover change in mountain landscapes, taking the advantage of the comparative perspective. The project will also support planning and decision making to develop sustainable land use strategies and to set up appropriate management and conservation priorities.

**More information:**

Prof. Jacek Kozak, Institute of Geography and Spatial Management, Jagiellonian University ([jkozak@gis.geo.uj.edu.pl](mailto:jkozak@gis.geo.uj.edu.pl))

Dr. Urs Gimmi, WSL, Research Unit Land Use Dynamics ([urs.gimmi@wsl.ch](mailto:urs.gimmi@wsl.ch))

Project website: <http://www.gis.geo.uj.edu.pl/FORECOM/index.html>

To download project publications and conference presentations, please consult: <http://www.gis.geo.uj.edu.pl/FORECOM/outreach.html>

---

## FREE POSITION

---



University of the  
Highlands and Islands  
Perth College

Centre for  
Mountain Studies



### Research Assistant/Conference Support

### Two Years Full-time / Fixed Term from April 2015

The **Centre for Mountain Studies** and the UNESCO Chair in Sustainable Mountain Development are based in Perth, at Perth College UHI, an academic partner in Scotland's newest University, the University of the Highlands and Islands. The advertised post is to fill a key need in the team working at the Centre, working on all aspects of project development and delivery, including the organisation and delivery of a major international conference in October 2015. Excellent communication skills and a strong interest in knowledge exchange are important.

**Please see** [www.perth.uhi.ac.uk/mountainstudies](http://www.perth.uhi.ac.uk/mountainstudies) for more detail about the CMS and the conference.

**To submit your application** for this post, please go to <https://perthcollegestaff.ciphrr.com/Jobsearchresult.aspx>, click on 'Apply' and complete the on-screen form; alternatively, a recruitment pack can be requested by telephoning +44 (0)1738 877444 (answering machine).

**Closing date: Wednesday 18 February 2015 at 12 noon**

#### JOB DESCRIPTION

<b>JOB TITLE</b>	Research Assistant/Conference Support
<b>CURRICULUM AREA</b>	Centre for Mountain Studies
<b>LOCATION</b>	Perth College UHI
<b>RESPONSIBLE TO</b>	Director, Centre for Mountain Studies
<b>SALARY</b>	£22,724 to £25,695
<b>HOURS OF WORK</b>	36.25 per week

### **Purpose of Post**

To work on all aspects of project development and implementation, and contribute to a successful international conference in October 2015.

### **Key Activities**

The postholder will be expected to:

- Assist in the planning and implementation of an international conference in October 2015, including registration, liaison with delegates, conference events, and collating, editing and summarising abstracts
- Identify research and consulting project opportunities
- Develop research project concepts
- Liaise with potential funders of research and consultancies
- Prepare project proposals
- Implement all phases of research and consulting projects
- Write reports
- Update and maintain websites

This job description does not present an exhaustive list of duties and the post holder is required to undertake other activities as reasonably instructed commensurate with the role and level of responsibility in fulfilment of the purpose of the post.

### **Reporting Structure**

The post holder reports to the Director, Centre for Mountain Studies.

### **Terms and Conditions**

This post is governed by support staff terms and conditions, which are subject to collective bargaining processes.

### **Equality and Diversity**

The post holder is expected to be familiar with and to comply with the terms of the College's Equal Opportunities Strategy and associated schemes.

### **Health and Safety**

The post holder is expected to be familiar with and to comply with the terms of the College's policies and procedures ensuring the health, safety and well-being of staff, students and visitors. There are no identified specific health and safety risks or training needs associated with this post.

This post undertakes regulated work with children and a Protecting Vulnerable Groups (PVG) Scheme check is required. A check will be made against the list of those barred from working with children. We are positive about disabled people and guarantee to interview all disabled applicants who meet the minimum criteria for this vacancy.



<b>PERSON SPECIFICATION Attributes</b>	<b>Essential</b>	<b>Desirable</b>	<b>Evaluation Method</b>
<b>Experience</b>	Experience of research and/or knowledge exchange.	Work experience with relevant organisations. Writing proposals and reports. Organising conferences or other meetings.	Application form and interview.
<b>Qualifications and Training</b>	MSc in environmental policy/management /science or similar.	First degree in natural sciences/ geography.	Application form and interview.
<b>Knowledge</b>	Good knowledge of concepts and issues in sustainable development.	Knowledge of: - relevant organisations - sources of research and consulting opportunities - sustainable mountain development	Application form and interview.
<b>Skills and Abilities</b>	Good communication skills. A strong interest in knowledge exchange. Ability to: - be proactive and work autonomously - work as part of a project team - plan and meet deadlines Operate standard work processing, spreadsheet, internet and email programmes	Website authoring and management skills. Database development and management.	Application form and interview.
<b>Other Requirements</b>	A willingness to travel in the UK and internationally.	Interest in mountain environment and people. Full driving license.	Application form and i

---

## POSTDOCTORAL RESEARCH ASSOCIATE

---

The University of Hohenheim (Germany) invites **applications for a postdoctoral research position at the newly created Chair of Societal Transition and Agriculture.**

UNIVERSITY OF HOHENHEIM



Rooted in social sciences and particularly drawing on the concepts of cultural landscapes and social-ecological resilience, the Chair is dedicated towards transdisciplinary sustainability research as related to a broad range of land-use systems. Central topics addressed are the conditions, potentials and problems of sustainable land use in the context of global change; for this, perceptions, preferences, knowledge and actions of land users as well as the societal discourses they are embedded in are investigated. The position offers exciting opportunities to be part of and to contribute to the establishment of this profile at one of Germany's most beautiful universities.

### Responsibilities

For about 50% of your time, you will be carrying out research on a self-identified topic in the field of sustainability transformations in a land use-related application (e.g. values and beliefs and their role for triggering changes in production and consumption patterns; knowledge co-production; adaptive / transformative capacity, change agents, linkages between agrobiodiversity and food cultures). For the rest of the time, you will be developing, organizing and teaching courses at Bachelor and Master level (as connected to your individual expertise) as well as carrying out academic services (e.g. preparation of research proposals, project management).

### Qualifications

We are looking for a person who:

- Holds a university degree (Diploma or Master) in a relevant discipline (e.g. Agricultural sciences, environmental sciences, human geography, sociology)
- Holds a PhD or has several years of experience in carrying out research projects
- Is experienced in publishing for an international scientific audience
- Has a thorough background in social sciences and a strong interest in transdisciplinary collaboration
- Is interested in interactive teaching formats
- Is willing and able to work in a team
- Knowledge of German is preferable, but not mandatory

### Employment conditions

Employment is **full time for three years**; an extension of up to three years could be negotiated. **Start date is 1st April 2015, or as soon as possible thereafter.** Salary will be paid according to **German pay scale E13 TV-L**. The University of Hohenheim wants to increase the proportion of women in research and teaching and strongly encourages qualified female scientists to apply. With equal qualifications, preference will be given to candidates with disabilities.

**Application**

The application should contain a motivation letter, an outline of your research ideas (max. three pages), a complete CV, copies of university certificates, and any other documentation that may be of interest (e.g. relevant publications). Please also include names and contact information of two academic referees.

Questions regarding this position may be directed to the future Head of the Chair of Societal Transition and Agriculture, Dr. Claudia Bieling at [claudia.bieling@landespflege.uni-freiburg.de](mailto:claudia.bieling@landespflege.uni-freiburg.de)

Please send your email application in a single PDF file **by 31st March, 2015**, at the latest, to: [julia.rietze@uni-hohenheim.de](mailto:julia.rietze@uni-hohenheim.de)

**EVENTS**

**The 8th World Conference of the Ecosystem Services Partnership (ESP)**  
**Stellenbosch, South Africa**  
**9-13 November 2015.**



In addition to many sessions organised by the ESP working groups, the conference will present examples of the use of Ecosystem Services in Business and include special problem-solving workshops and sessions focussed on Africa.

The conference will be held at Spier Conference Centre & Wine Farm near Cape Town.

For information on the conference: <http://www.esconference.org>

For information on ESP: [www.es-partnership.org](http://www.es-partnership.org)

\*\*\*\*\*

**Mountain Research Initiative Key Contact Workshop**

**Café Landtmann's Bel Etage, Vienna, Austria**

**Sunday, 12 April 2015, 8:30-5:30 PM**

Link: <http://mri.scnatweb.ch/en/events/key-contact-workshops/2131-2015-04-12,-vienna,-mri-kcw-prior-to-the-egu-general-assembly-2>



**The Mountain Research Initiative**  
 Advancing Global Change Research in Mountains

**Background**

A Key Contact Workshop (KCW) is a 1-day event facilitating and fostering dialogue between



scientists with various backgrounds. The three work tools, namely written research summaries, snapshot presentations, and small working groups, stimulate interdisciplinary thinking and allow peers to take a fresh look at your research. The workshop accommodates a maximum of 24 speakers/working group chairs, as well as a few additional participants from a broad range of fields and disciplines in both the natural and social sciences. KCWs usually precede major conferences that mountain researchers attend anyway, in this case the [2015 General Assembly of the European Geosciences Union](#).

### **Objectives**

The Key Contact Workshops bring together active researchers from around the world working on global change in mountain regions to

- present a brief overview of their research programs and receive input from an interdisciplinary group,
- comment on fellow participants' research, and
- discover opportunities for new interdisciplinary research collaborations.

### **Outcomes**

A KCW is also an excellent chance to network and develop collaborations with other mountain scientists in an informal setting before large conferences such as EGU or ESA. A Catalogue of Research Summaries is compiled for every KCW, providing participants with a detailed look at what other researchers are working on.

### **Fees**

It's free! No fees apply to workshop participation. The workshop is a full day's event with lunch and coffee provided by MRI. However, participants are expected to organize their travel and accommodation themselves and to cover their respective expenses.

### **To register**

1. Fill out a [research summary](#).
2. Send it to [erin.gleeson@giub.unibe.ch](mailto:erin.gleeson@giub.unibe.ch) and attach TWO digital photos of yourself (one from the field and one portrait)
3. Participate!

### **Workshop Organizers**

Erin Gleeson and Claudia Drexler  
The Mountain Research Initiative  
c/o Institute of Geography, University of Bern  
Erlachstrasse 9a Trakt 3  
3012 Bern, Switzerland  
+41 (0)31 631 51 41  
<http://mri.scnatweb.ch>  
[mri@giub.unibe.ch](mailto:mri@giub.unibe.ch)

---

## CALL FOR PAPERS

---

### Special Issue and Symposium on Sustainable Planning Approaches for New Urban Pheripheries: Call for papers

**Link:** <http://www.journals.elsevier.com/landscape-and-urban-planning/news/special-issue-on-sustainable-planning-approache/>

#### Objectives and Themes

The objective of this Special Issue is to advance the understanding of how sustainable planning approaches can be applied in new urban peripheries to promote sustainability.

Articles of the special issue will address the following research questions:

- What are the characteristics and peculiarities of new urban peripheries worldwide?
- How should existing planning approaches be updated or reformulated for most effective application in new urban peripheries?
- How can sustainable planning approaches be made actionable in complex contexts of new urban peripheries?
- Which uncertainties/limitations about the effectiveness of these approaches should be considered?
- Which trade-offs can be raised and/or managed by sustainable planning approaches in the contexts of new urban peripheries?

We welcome papers in the forms of **reviews, empirical case studies, perspectives and theoretical framework proposals** representative of different geographical contexts worldwide. A maximum of **8-10 papers will be selected**.

#### Manuscript submission

Manuscripts should be between 4,000 and 8,000 words and **submitted through the LAND website by 30 June 2015**. All papers submitted for this Special Issue will undergo the usual LAND peer review process.

Details on article type and format are available from the LAND journal website at: <http://www.journals.elsevier.com/landscape-and-urban-planning>

#### **Affiliated LAND Symposium at the IUFRO Landscape Ecology Conference will be in Tartu, 23-30 August 2015.**

The goal of the Symposium is twofold:

- 1) to promote discussion about the Special Issue topics between contributors and a broader group of interested scholars;

2) to improve the overall cohesiveness of the Special Issue and promote the development of a joint synthesis paper among authors to be included in the Special Issue.

It is expected that authors contributing to the Special Issue will present at this Symposium, but we are also inviting additional presentations to contribute to the discussion.

An **extended abstract of 200 words** can be submitted before **10 March 2015**.

---

## PUBLICATIONS

---

Gailing, Ludger; Leibenath, Markus, 2015: The social construction of landscapes: Two theoretical lenses and their empirical applications. In: *Landscape Research* 40 (2015) 2, S.123-138 <http://dx.doi.org/10.1080/01426397.2013.775233>

Fritz, S., See, L., McCallum, I., You, L., Bun, A., Moltchanova, E., Duerauer, M., Albrecht, F., Schill, C., Perger, C., Havlik, P., Mosnier, A., Thornton, P., Wood-Sichra, U., Herrero, M., Becker-Reshef, I., Justice, C., Hansen, M., Gong, P., Abdel Aziz, S., Cipriani, A., Cumani, R., Cecchi, G., Conchedda, G., Ferreira, S., Gomez, A., Haffani, M., Kayitakire, F., Malanding, J., Mueller, R., Newby, T., Nonguierma, A., Olusegun, A., Ortner, S., Rajak, D. R., Rocha, J., Schepaschenko, D., Schepaschenko, M., Terekhov, A., Tiangwa, A., Vancutsem, C., Vintrou, E., Wenbin, W., van der Velde, M., Dunwoody, A., Kraxner, F. and Obersteiner, M. (2015), Mapping global cropland and field size. *Global Change Biology*. doi: 10.1111/gcb.12838 <http://onlinelibrary.wiley.com/doi/10.1111/gcb.12838/pdf>

Mazziotta, A., Triviño, M., Tikkanen, O.-P., Kouki, J., Strandman, H. and Mönkkönen, M. (2015), Applying a framework for landscape planning under climate change for the conservation of biodiversity in the Finnish boreal forest. *Global Change Biology*, 21: 637–651. doi: 10.1111/gcb.12677 <http://onlinelibrary.wiley.com/doi/10.1111/gcb.12677/pdf>

Bezák, Bezáková, 2014 Landscape capacity for ecosystem services provision based on expert knowledge and public perception (case study from the north -west Slovakia). *Ekológia* (Bratislava), Vol. 33, No. 4,

Timmermann, A., Damgaard, C., Strandberg, M. T., Svenning, J.-C. (2015), Pervasive early 21st-century vegetation changes across Danish semi-natural ecosystems: more losers than winners and a shift towards competitive, tall-growing species. *Journal of Applied Ecology*, 52: 21–30. doi: 10.1111/1365-2664.12374 <http://onlinelibrary.wiley.com/doi/10.1111/1365-2664.12374/epdf>

Kusumoto, B., Shiono, T., Miyoshi, M., Maeshiro, R., Fujii, S.-j., Kuuluvainen, T., Kubota, Y. (2015), Functional response of plant communities to clearcutting: management impacts differ between forest vegetation zones. *Journal of Applied Ecology*, 52: 171–180. doi: 10.1111/1365-2664.12367 <http://onlinelibrary.wiley.com/doi/10.1111/1365-2664.12367/epdf>

Lomba, A., Alves, P., Jongman, R. H. G. and McCracken, D. I. (2015), Reconciling nature conservation and traditional farming practices: a spatially explicit framework to assess the

extent of High Nature Value farmlands in the European countryside. *Ecology and Evolution*. doi: 10.1002/ece3.1415 <http://onlinelibrary.wiley.com/doi/10.1002/ece3.1415/epdf>

Shackelford, G. E., Steward, P. R., German, R. N., Sait, S. M., Benton, T. G. (2015), Conservation planning in agricultural landscapes: hotspots of conflict between agriculture and nature. *Diversity and Distributions*, 21: 357–367. doi: 10.1111/ddi.12291 <http://onlinelibrary.wiley.com/doi/10.1111/ddi.12291/epdf>

Lehsten, V., Sykes, M. T., Scott, A. V., Tzanopoulos, J., Kallimanis, A., Mazaris, A., Verburg, P. H., Schulp, C. J. E., Potts, S. G. and Vogiatzakis, I. (2015), Disentangling the effects of land-use change, climate and CO<sub>2</sub> on projected future European habitat types. *Global Ecology and Biogeography*. doi: 10.1111/geb.12291 <http://onlinelibrary.wiley.com/doi/10.1111/geb.12291/epdf>

Gandy, M. (2015), From urban ecology to ecological urbanism: an ambiguous trajectory. *Area*. doi: 10.1111/area.12162 <http://onlinelibrary.wiley.com/doi/10.1111/area.12162/epdf>

Salvati, L. And Ranalli, F. (2015), ‘Land of Fires’: Urban Growth, Economic Crisis, and Forest Fires in Attica, Greece. *Geographical Research*, 53: 68–80. doi: 10.1111/1745-5871.12093 <http://onlinelibrary.wiley.com/doi/10.1111/1745-5871.12093/epdf>

Duru, M., Jouany, C., Theau, J. P., Granger, S. and Cruz, P. (2015), A plant-functional-type approach tailored for stakeholders involved in field studies to predict forage services and plant biodiversity provided by grasslands. *Grass and Forage Science*, 70: 2–18. doi: 10.1111/gfs.12129 <http://onlinelibrary.wiley.com/doi/10.1111/gfs.12129/epdf>

Kuebbing, S. E. and Nuñez, M. A. (2015), Negative, neutral, and positive interactions among nonnative plants: patterns, processes, and management implications. *Global Change Biology*, 21: 926–934. doi: 10.1111/gcb.12711 <http://onlinelibrary.wiley.com/doi/10.1111/gcb.12711/epdf>

Eitelberg, D. A., van Vliet, J. and Verburg, P. H. (2015), A review of global potentially available cropland estimates and their consequences for model-based assessments. *Global Change Biology*, 21: 1236–1248. doi: 10.1111/gcb.12733 <http://onlinelibrary.wiley.com/doi/10.1111/gcb.12733/epdf>

Gazull, L. and Gautier, D. (2015), Woodfuel in a global change context. *WIREs Energy Environ.*, 4: 156–170. doi: 10.1002/wene.115

De Keersmaecker, W., Lhermitte, S., Tits, L., Honnay, O., Somers, B. and Coppin, P. (2015), A model quantifying global vegetation resistance and resilience to short-term climate anomalies and their relationship with vegetation cover. *Global Ecology and Biogeography*. doi: 10.1111/geb.12279 <http://onlinelibrary.wiley.com/doi/10.1111/geb.12279/epdf>

Schwörer, C., Colombaroli, D., Kaltenrieder, P., Rey, F., Tinner, W. (2015), Early human impact (5000–3000 BC) affects mountain forest dynamics in the Alps. *Journal of Ecology*, 103: 281–295. doi: 10.1111/1365-2745.12354 <http://onlinelibrary.wiley.com/doi/10.1111/1365-2745.12354/epdf>

Farrer, E. C., Ashton, I. W., Spasojevic, M. J., Fu, S., Gonzalez, D. J. X., Suding, K. N. (2015), Indirect effects of global change accumulate to alter plant diversity but not ecosystem

function in alpine tundra. *Journal of Ecology*, 103: 351–360. doi: 10.1111/1365-2745.12363  
<http://onlinelibrary.wiley.com/doi/10.1111/1365-2745.12363/epdf>

Lind, L., Nilsson, C. (2015), Vegetation patterns in small boreal streams relate to ice and winter floods. *Journal of Ecology*, 103: 431–440. doi: 10.1111/1365-2745.12355  
<http://onlinelibrary.wiley.com/doi/10.1111/1365-2745.12355/epdf>

Jeffers, E. S., Bonsall, M. B., Froyd, C. A., Brooks, S. J., Willis, K. J. (2015), The relative importance of biotic and abiotic processes for structuring plant communities through time. *Journal of Ecology*, 103: 459–472. doi: 10.1111/1365-2745.12365  
<http://onlinelibrary.wiley.com/doi/10.1111/1365-2745.12365/epdf>

Max Nielsen-Pincus, Robert G. Ribe, Bart R. Johnson, Spatially and socially segmenting private landowner motivations, properties, and management: A typology for the wildland urban interface, *Landscape and Urban Planning*, Volume 137, May 2015, Pages 1-12, ISSN 0169-2046, <http://dx.doi.org/10.1016/j.landurbplan.2014.11.020>

Limin Jiao, Lifan Mao, Yaolin Liu, Multi-order Landscape Expansion Index: Characterizing urban expansion dynamics, *Landscape and Urban Planning*, Volume 137, May 2015, Pages 30-39, ISSN 0169-2046, <http://dx.doi.org/10.1016/j.landurbplan.2014.10.023>.

Enrico Celio, Michel Ott, Elina Sirén, Adrienne Grêt-Regamey, A prototypical tool for normative landscape scenario development and the analysis of actors' policy preferences, *Landscape and Urban Planning*, Volume 137, May 2015, Pages 40-53, ISSN 0169-2046, <http://dx.doi.org/10.1016/j.landurbplan.2014.12.013>.

Monica A. Dorning, Jennifer Koch, Douglas A. Shoemaker, Ross K. Meentemeyer, Simulating urbanization scenarios reveals tradeoffs between conservation planning strategies, *Landscape and Urban Planning*, Volume 136, April 2015, Pages 28-39, ISSN 0169-2046, <http://dx.doi.org/10.1016/j.landurbplan.2014.11.011>.

Guofu Yang, Ying Ge, Hui Xue, Wu Yang, Yan Shi, Changhui Peng, Yuanyuan Du, Xing Fan, Yuan Ren, Jie Chang, Using ecosystem service bundles to detect trade-offs and synergies across urban–rural complexes, *Landscape and Urban Planning*, Volume 136, April 2015, Pages 110-121, ISSN 0169-2046, <http://dx.doi.org/10.1016/j.landurbplan.2014.12.006>.

Qingmin Meng, Regional landscape mapping through a method of chain standardization of Landsat images, *Landscape and Urban Planning*, Volume 134, February 2015, Pages 1-9, ISSN 0169-2046, <http://dx.doi.org/10.1016/j.landurbplan.2014.10.004>.

M.D. López-Rodríguez, A.J. Castro, H. Castro, S. Jorreto, J. Cabello, Science–policy interface for addressing environmental problems in arid Spain, *Environmental Science & Policy*, Volume 50, June 2015, Pages 1-14, ISSN 1462-9011, <http://dx.doi.org/10.1016/j.envsci.2015.01.013>.

Agata Pietrzyk-Kaszyńska, Małgorzata Grodzińska-Jurczak, Bottom-up perspectives on nature conservation systems: The differences between regional and local administrations, *Environmental Science & Policy*, Volume 48, April 2015, Pages 20-31, ISSN 1462-9011, <http://dx.doi.org/10.1016/j.envsci.2014.12.010>.

Elizabeth A. Fulton, Fabio Boschetti, Miriana Sporcic, Tod Jones, L. Richard Little, Jeffrey M. Dambacher, Randall Gray, Roger Scott, Rebecca Gorton, A multi-model approach to engaging stakeholder and modellers in complex environmental problems, *Environmental Science & Policy*, Volume 48, April 2015, Pages 44-56, ISSN 1462-9011, <http://dx.doi.org/10.1016/j.envsci.2014.12.006>.

Olivier Bahn, Marc Chesney, Jonathan Gheysens, Reto Knutti, Anca Claudia Pana, Is there room for geoengineering in the optimal climate policy mix?, *Environmental Science & Policy*, Volume 48, April 2015, Pages 67-76, ISSN 1462-9011, <http://dx.doi.org/10.1016/j.envsci.2014.12.014>.

Johanna Nalau, Benjamin L. Preston, Megan C. Maloney, Is adaptation a local responsibility?, *Environmental Science & Policy*, Volume 48, April 2015, Pages 89-98, ISSN 1462-9011, <http://dx.doi.org/10.1016/j.envsci.2014.12.011>.

D. Rodríguez-Rodríguez, S.E. Rees, L.D. Rodwell, M.J. Attrill, Assessing the socioeconomic effects of multiple-use MPAs in a European setting: A national stakeholders' perspective, *Environmental Science & Policy*, Volume 48, April 2015, Pages 115-127, ISSN 1462-9011, <http://dx.doi.org/10.1016/j.envsci.2014.12.020>.

Maryia Mandryk, Pytrik Reidsma, Kiki Kartikasari, Martin van Ittersum, Bas Arts, Institutional constraints for adaptive capacity to climate change in Flevoland's agriculture, *Environmental Science & Policy*, Volume 48, April 2015, Pages 147-162, ISSN 1462-9011, <http://dx.doi.org/10.1016/j.envsci.2015.01.001>.

Ralf Barkemeyer, Lindsay C. Stringer, James A. Hollins, Ferdinand Josephi, Corporate reporting on solutions to wicked problems: Sustainable land management in the mining sector, *Environmental Science & Policy*, Volume 48, April 2015, Pages 196-209, ISSN 1462-9011, <http://dx.doi.org/10.1016/j.envsci.2014.12.021>.

Lauren Withycombe Keeler, Arnim Wiek, Dave D. White, David A. Sampson, Linking stakeholder survey, scenario analysis, and simulation modeling to explore the long-term impacts of regional water governance regimes, *Environmental Science & Policy*, Volume 48, April 2015, Pages 237-249, ISSN 1462-9011, <http://dx.doi.org/10.1016/j.envsci.2015.01.006>.

Gabrielle Bouleau, Didier Pont, Did you say reference conditions? Ecological and socio-economic perspectives on the European Water Framework Directive, *Environmental Science & Policy*, Volume 47, March 2015, Pages 32-41, ISSN 1462-9011, <http://dx.doi.org/10.1016/j.envsci.2014.10.012>.

Rien van Stigt, Peter P.J. Driessen, Tejo J.M. Spit, A user perspective on the gap between science and decision-making. Local administrators' views on expert knowledge in urban planning, *Environmental Science & Policy*, Volume 47, March 2015, Pages 167-176, ISSN 1462-9011, <http://dx.doi.org/10.1016/j.envsci.2014.12.002>.

A. Lehmann, G. Giuliani, E. Mancosu, K.C. Abbaspour, S. Sözen, D. Gorgan, A. Beel, N. Ray, Filling the gap between Earth observation and policy making in the Black Sea catchment with



enviroGRIDS, Environmental Science & Policy, Volume 46, February 2015, Pages 1-12, ISSN 1462-9011, <http://dx.doi.org/10.1016/j.envsci.2014.02.005>.

E. Mancosu, A. Gago-Silva, A. Barbosa, A. de Bono, E. Ivanov, A. Lehmann, J. Fons, Future land-use change scenarios for the Black Sea catchment, Environmental Science & Policy, Volume 46, February 2015, Pages 26-36, ISSN 1462-9011, <http://dx.doi.org/10.1016/j.envsci.2014.02.008>.

Ioana Popescu, Eugenia Cioaca, Quan Pan, Andreja Jonoski, Jenica Hanganu, Use of hydrodynamic models for the management of the Danube Delta wetlands: The case study of Sontea-Fortuna ecosystem, Environmental Science & Policy, Volume 46, February 2015, Pages 48-56, ISSN 1462-9011, <http://dx.doi.org/10.1016/j.envsci.2014.01.012>.

Ademola A. Adenle, Casey Stevens, Peter Bridgewater, Global conservation and management of biodiversity in developing countries: An opportunity for a new approach, Environmental Science & Policy, Volume 45, January 2015, Pages 104-108, ISSN 1462-9011, <http://dx.doi.org/10.1016/j.envsci.2014.10.002>.

Erik Mostert, Who should do what in environmental management? Twelve principles for allocating responsibilities, Environmental Science & Policy, Volume 45, January 2015, Pages 123-131, ISSN 1462-9011, <http://dx.doi.org/10.1016/j.envsci.2014.10.008>.

Steven Warnock & Geoffrey Griffiths, Publishing models and article dates explained, Landscape research, Volume 4, Issue 3, 2015, pages 261-278, DOI:10.1080/01426397.2013.870541

Hege Hofstad, Mari Sundli Tveit & Knut Bjørn Stokke, Between Development and Protection: Different Discourses in Urban Planning, Landscape research, Volume 4, Issue 3, 2015, pages 279-293, DOI:10.1080/01426397.2014.891727

Ludger Gailing & Markus Leibenath, The Social Construction of Landscapes: Two Theoretical Lenses and Their Empirical Applications, Landscape research, Volume 4, Issue 2, 2015, pages 123-138, DOI:10.1080/01426397.2013.775233

Arnar Árnason, Sigurjón Baldur Hafsteinsson, Tinna Grétarsdóttir, Kristinn Schram & Katla Kjartansdóttir, Speeding Towards the Future through the Past: Landscape, Movement and National Identity, Landscape research, Volume 4, Issue 1, 2015, pages 23-38, DOI:10.1080/01426397.2013.875987

\*\*\*\*\*



**"Future Imperfect – Climate Change and Adaptation in the Carpathians"**

The synthesis publication builds on the main findings of three projects – CARPATCLIM (development of a database on climate data from 1961-2010), CARPIVIA (Carpathian Integrated Assessment of Vulnerability to Climate Change and Ecosystem-based Adaptation Measures) and CarpathCC (examining the vulnerability of water, soil, forests, ecosystems and related production systems). All 3 projects were funded under the preparatory action "Climate of the Carpathian Basin" approved by the European Parliament. This report is directed at policy makers and the public in the Carpathian region.

**Publication on :**

[http://www.carpathianconvention.org/tl\\_files/carpathiancon/Downloads/04%20Publication%20-%20Press%20-%20Gallery/Documents%20and%20Publications/FutureImperfect\\_lo.pdf](http://www.carpathianconvention.org/tl_files/carpathiancon/Downloads/04%20Publication%20-%20Press%20-%20Gallery/Documents%20and%20Publications/FutureImperfect_lo.pdf)

\*\*\*\*\*



**SUSTAINABLE DEVELOPMENT GOALS AND INTEGRATION:  
Achieving a better balance between the economic, social and environmental dimensions**

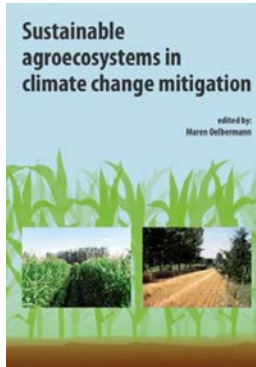
This paper aims to contribute to the discussions on the integration and balance of the three dimensions of sustainable development within the SDGs framework by:

- o Providing government representatives and other stakeholders with a number of options for building upon the SDGs proposed by the OWG to see that they better balance the three dimensions of sustainable development
- o Ensuring innovative recommendations for SDGs and associated targets put forward by stakeholders, based upon experience and expertise, are considered during efforts to develop and build consensus on a global SDGs framework as part of the Post-2015 Development Agenda.

**Publication on:**

<http://www.stakeholderforum.org/fileadmin/files/Balancing%20the%20dimensions%20in%20the%20SDGs%20FINAL.pdf>

\*\*\*\*\*



## **Sustainable Agroecosystems in Climate Change Mitigation**

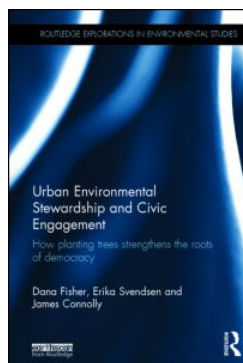
By **Oelbermann, M. (ed.)**

Wageningen Academic Publishers, Wageningen,  
the Netherlands, 2014

272 p., hardback: ISBN: 978-90-8686-235-1.

One of the challenges under current land management practices is to increase food and soil security to meet projected trends in food production, while maintaining the resilience to climate change. This book provides a forum for researchers to access the most recent developments in enhancing carbon sinks and minimizing greenhouse gas emissions. It suggests that policies and practices integrating microbial technology, modern crop cultivars, conservation practices, increased manure application, organic farming and agroforestry have a greater capacity to sequester carbon and reduce carbon-based greenhouse gases, leading to more robust agroecosystems compared to conventional agriculture. It is argued that empirical models can represent powerful tools for assessing how mitigation and adaptation strategies can be used to optimize crop yield and minimize greenhouse gas emissions under future climate change scenarios. 'Sustainable agroecosystems in climate change mitigation' bridges our current knowledge gaps and recognizes the contribution of sustainable agricultural practices as a way forward in reducing the global carbon and nitrogen footprint. It is relevant for students, researchers, governmental and non-governmental organisations interested in climate change mitigation, sustainable agriculture, soil science, modern analytical techniques and modelling. It answers the questions: 'How can sustainable agroecosystems help mitigate climate change?' and 'What are the tools to achieve this goal?'

\*\*\*\*\*



## **Urban Environmental Stewardship and Civic Engagement**

### **How planting trees strengthens the roots of democracy**

By *Dana R. Fisher, Erika S. Svendsen, James Connolly*

Routledge – 2015 – 132 pages

Series: Routledge Explorations in Environmental Studies

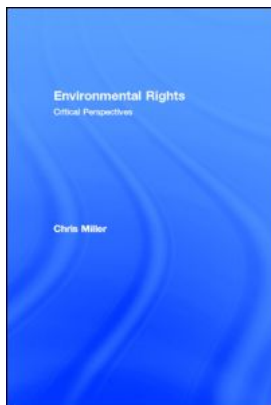
Once considered the antithesis of a verdant and vibrant ecosystem, cities are now being hailed as highly efficient and complex social ecological systems. Emerging from the streets of the post-industrial city are well-tended community gardens, rooftop farms and other viable habitats capable of supporting native flora and fauna. At the forefront of this transformation are the citizens living in the cities themselves. As people

around the world increasingly relocate to urban areas, this book discusses how they engage in urban stewardship and what civic participation in the environment means for democracy.

Drawing on data collected through a two-year study of volunteer stewards who planted trees as part of the MillionTreesNYC initiative in the United States, this book examines how projects like this can make a difference to the social fabric of a city. It analyses quantitative survey data along with qualitative interview data that enables the volunteers to share their personal stories and motivations for participating, revealing the strong link between environmental stewardship and civic engagement.

As city governments in developed countries are investing more and more in green infrastructure campaigns to change the urban landscape, this book sheds light on the social importance of these initiatives and shows how individuals' efforts to reshape their cities serve to strengthen democracy. It draws out lessons that are highly applicable to global cities and policies on sustainability and civic engagement.

\*\*\*\*\*



**Environmental Rights  
Critical Perspectives**

By *Chris Miller*

Routledge – 2015

*Environmental Rights* offers new perspectives on contemporary debates over rights and environmental issues. It draws on key theories of contemporary philosophers and jurists and case reports from decisions in English, European and US courts. It

also examines recent developments within environmental law and policy in the UK and the EU. Specific rights of the individual are examined - the right to clean air and water, access to information, the right to participate in environmental decisions - as well as the practical obstacles to the exercising of these rights.

Subjects: 1. Environmental Studies, 2. Economic Geography, 3. Environmental Geography.

\*\*\*\*\*



**Politics of the Environment  
A Survey**

Edited by *Chukwumerije Okereke*

Routledge – 2014 – 312 pages

Series: *Europa Politics of ... series*

The environment is increasingly seen at the forefront of many political agendas. Covering and analysing important topics, such as

the Kyoto protocol and deforestation, this book provides extensive coverage of all aspects of environmental politics. This unbiased survey is of interest to students, academics, business people and general researchers.

Four sections present a thorough overview of current issues in the politics of the environment in historical perspective. The first section consists of essays written by a variety of academic and other experts on topics including Globalization: The Environment and Development Debate; The State, International Relations and the Environment; Environmental Movements; Mass Media and Environmental Politics; and The Ethical Dimensions of Global Environmental Change.

The second section is an A-Z glossary of the Environment, which includes detailed entries explaining terms and topics such as Acid Rain, Biodiversity, Ozone Layer Depletion, Renewable Energy and Sustainable Development. In the third section maps show conservation areas, wetlands, tropical forests, greenhouse gas emissions, energy consumption etc. In the final section, statistics offer data on issues such as greenhouse gas emissions, population growth, threatened species and ratification of environmental treaties.

\*\*\*\*\*



**Improving Global Environmental Governance**

**Best Practices for Architecture and Agency**

*Edited by Norichika Kanie, Steinar Andresen, Peter M. Haas*

Routledge – 2014

**Series: [Routledge Research in Global Environmental Governance](#)**

The experience of environmental governance is approached in *Improving Global Environmental Governance* from the unique perspective of actor configuration and embedded networks of actors, which are areas of emerging importance. The chapters look at existing Multilateral Environmental Agreements (MEAs) and the broader constellation of partially networked institutions to better understand the involvement of individual actors and how to deepen the networks that include them to generate more effective governance.

The book covers a wide range of issued pertaining to environmental governance including trans-boundary air pollution, marine pollution, biodiversity and ozone depletion. It also examines partnerships as a hybrid case of emerging modes of environmental governance. These partnerships are a recent form of actor configuration that warrant attention for dealing with global environmental threats in order to better understand the full potential of actor configurations in the absence of state involvement. In order to test applicability to on-going but stalled processes, the book applies the approach to one of the most difficult issues we face: climate change.

By addressing key questions in this important area, the book provides new perspectives in the nexus between agency and architecture in environmental governance in the twenty-first century.

\*\*\*\*\*



**Planning and Conflict**  
**Critical Perspectives on Contentious Urban Developments**

Edited by *Enrico Gualini*

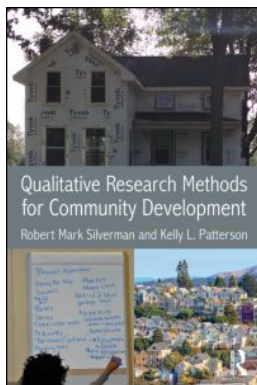
Routledge – 2015 – 316 pages

Series: RTPI Library Series

*Planning and Conflict* discusses the reasons for conflicts around urban developments and analyzes their shape in contemporary cities. It offers an interdisciplinary framework for scholars to engage with the issue of planning conflicts, focusing on both empirical and theoretical inquiry.

By reviewing different perspectives for planners to engage with conflicts, and not simply mediate or avoid them, *Planning and Conflict* provides a theoretically informed look forward to the future of engaged, responsive city development that involves all its stakeholders.

\*\*\*\*\*



**Qualitative Research Methods for Community Development**

By *Robert Mark Silverman, Kelly L. Patterson*

Routledge – 2015 – 138 pages

*Qualitative Research Methods for Community Development* teaches the basic skills, tools, and methods of qualitative research with special attention to the needs of community practitioners. This book teaches students entering planning, community development, nonprofit management, social work, and similar

applied fields the core skills necessary to conduct systematic research designed to empower communities and promote social change.

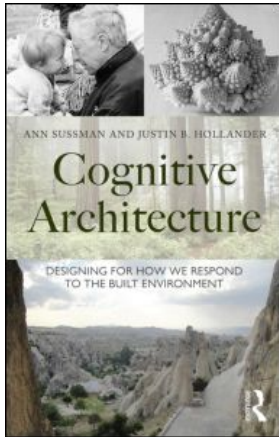
Focusing on the basic elements of qualitative research, like field observation, interviewing, focus groups, and content analysis, *Qualitative Research Methods for Community Development* provides an overview of core methods and theoretical underpinnings of successful research. The book provides examples from past research used in transformative community projects across multiple disciplines. From housing, community organizing, neighborhood planning, and urban revitalization, this book gives students the skills they need to undertake their own projects, and provides professionals a valuable reference for their future research.

The book serves as a primary text for courses in applied qualitative research, and as a reference book for professionals and community-based researchers. In addition to content detailing core methods used in qualitative research, it includes a chapter which provides



guidance for the dissemination of qualitative results to a spectrum of audiences applying qualitative methods to action research and community empowerment.

\*\*\*\*\*



**Cognitive Architecture**  
**Designing for How We Respond to the Built Environment**

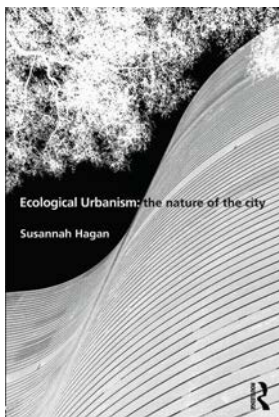
By *Ann Sussman, Justin B Hollander*

Routledge – 2015 – 194 pages

In *Cognitive Architecture*, the authors review new findings in psychology and neuroscience to help architects and planners better understand their clients as the sophisticated mammals they are, arriving in the world with built-in responses to the environment that have evolved over millennia.

The book outlines four main principles---Edges Matter, the fact people are a thigmotactic or a 'wall-hugging' species; Patterns Matter, how we are visually-oriented; Shapes Carry Weight, how our preference for bilateral symmetrical forms is biological; and finally, Storytelling is Key, how our narrative proclivities, unique to our species, play a role in successful place-making. The book takes an inside-out approach to design, arguing that the more we understand human behavior, the better we can design for it. The text suggests new ways to analyze current designs before they are built, allowing the designer to anticipate a user's future experience. More than one hundred photographs and drawings illustrate its key concepts. Six exercises and additional case studies suggest particular topics - from the significance of face-processing in the human brain to our fascination with fractals - for further study.

\*\*\*\*\*



**Ecological Urbanism: The Nature of the City**

By *Susannah Hagan*

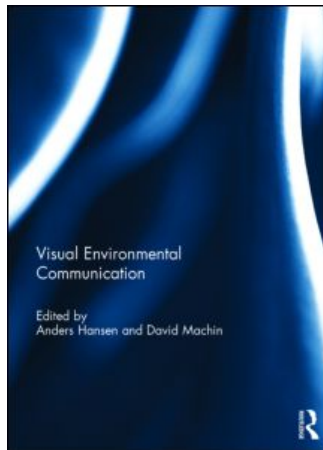
Routledge – 2015 – 188 pages

*Ecological Urbanism: The Nature of the City* asks the questions that are important inside and outside the built environment professions: what are climate change, urbanisation and ecology doing to the theory and practice of urban design? How does Ecological Urbanism figure in this change? What is Ecological Urbanism?

In answer, this book is neither definitive – impossible when a subject is still in motion – nor encyclopaedic – equally impossible when so much has been written on almost every aspect of these essays. Instead, it seeks to rebalance the ecological narrative and its embryonic

modes of practice with the narratives of urbanism and its older, deeply embedded modes of practice. It examines the implications for cities and the designers of cities now we are required to again address their metabolic as well as social and formal dimensions, and it explores the extent to which environmental engineering and natural systems design can and should become drivers for the remaking of cities in the 21st century. Above all, it argues that sooner rather than later, urbanism needs to become environmentally literate, and environmental design needs to become culturally literate.

\*\*\*\*\*



**Visual Environmental Communication**

Edited by *Anders Hansen, David Machin*

Unknown – 2015 – 170 pages

In 2008, the editors published a well-cited journal paper arguing that while scholarly work on media representations of environmental issues had made substantial progress in textual analysis there had been much less work on visual representations. This is surprising given the increasingly visual nature of media and communication, and in light of

emerging evidence that the environment is visualized through the use of increasingly symbolic and iconic images.

Addressing these matters, this volume marks out the present state of the field and contains chapters that represent fresh and exciting high quality scholarly work now emerging on visual environmental communication. These include a range of fascinating and often alarming topics which draw on a variety of methods and forms of visual communication. The book demonstrates that research needs to think much more widely about what we mean by the ‘visual’ which plays a massive yet under-researched role in the politics and ideology of public understanding and misunderstanding of and the environment and environmental problems.

The book is of relevance to students and researchers in media and communication studies, cultural studies, film and visual studies, geography, sociology, politics and other disciplines with an interest in the politics of visual environmental communication.

This book was published as a special issue of *Environmental Communication: A Journal of Nature and Culture*.

\*\*\*\*\*